

Recombinant

DGRmAb®

**Phospho-MCM2 (Ser27) (DGR33274) Rabbit mAb**

db11609

Package : 10µL 20µL 50µL 100µL

**Product Name** : Phospho-MCM2 (Ser27) (DGR33274) Rabbit mAb**Cat.No.:** db11609**Synonyms** : BM28; CCNL1; CDCL1; cdc19; DFNA70; D3S3194; MITOTIN**Application** : WB, IHC-P, ICC/IF, IP**Reactivity** : Human,Mouse,Rat**Host species** : Rabbit**Background**

The protein encoded by this gene is one of the highly conserved mini-chromosome maintenance proteins (MCM) that are involved in the initiation of eukaryotic genome replication. The hexameric protein complex formed by MCM proteins is a key component of the pre-replication complex (pre\_RC) and may be involved in the formation of replication forks and in the recruitment of other DNA replication related proteins. This protein forms a complex with MCM4, 6, and 7, and has been shown to regulate the helicase activity of the complex. This protein is phosphorylated, and thus regulated by, protein kinases CDC2 and CDC7. Multiple alternatively spliced transcript variants have been found, but the full-length nature of some variants has not been defined. [provided by RefSeq, Oct 2012]

**Immunogen**

A synthetic phosphopeptide corresponding to residues surrounding Ser27 of human MCM2

**Gene ID**

4171

**Swiss Prot**

P49736

**Synonyms**

BM28; CCNL1; CDCL1; cdc19; DFNA70; D3S3194; MITOTIN

**Reactivity**

Human,Mouse,Rat

**Application**

WB, IHC-P, ICC/IF, IP

**Recommended dilution**

WB: 1:2000-1:20000

IHC-P: 1:100-1:200

ICC/IF: 1:100-1:200

IP: 1:10-1:100

**Calculated MW**

102 kDa

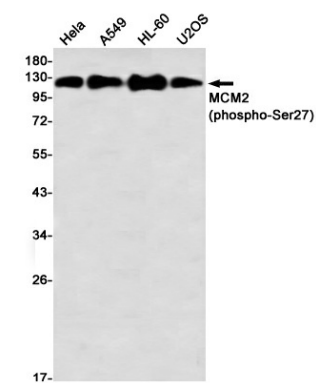
**Observed MW**

125 kDa

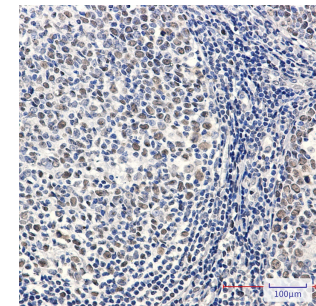
**Host species**

Rabbit

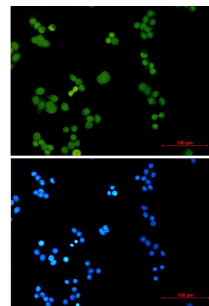
Clonality	Monoclonal
Clonality No.	DGR33274
Isotype	IgG
Purity	Affinity Purification
Conjugation	Un-conjugated
Storage Stability	Store at -20°C. Supplied in 50mM Tris-Glycine(pH 7.4), 0.15M NaCl, 40% Glycerol, 0.01% sodium azide and 0.05% BSA. Stable for 12 months from date of receipt.



Western blot detection of MCM2 (phospho-Ser27) in HeLa,A549,HL-60,U2OS using MCM2 (phospho-Ser27) antibody(1:1000 diluted)



Immunohistochemical analysis of paraffin-embedded human tonsil using db11609 antibody.



Immunofluorescent analysis of HeLa cells using db11609 antibody (green), and DAPI (blue).