

Recombinant

DGRmAb®

**Acetyl-Histone H3 (Lys27) (DGR14746) Rabbit mAb**

db11759

Package : 10µL 20µL 50µL 100µL

**Product Name** : Acetyl-Histone H3 (Lys27) (DGR14746) Rabbit mAb**Cat.No.:** db11759**Synonyms** : H3/j; H3C1; H3C2; H3C3; H3C4; H3C6; H3C7; H3C8; H3FJ; H3C10; H3C11; HIST1H3J**Application** : WB, IHC-P, ICC/IF, FC**Reactivity** : Human,Mouse,Rat**Host species** : Rabbit**Background**

Histones are basic nuclear proteins that are responsible for the nucleosome structure of the chromosomal fiber in eukaryotes. Two molecules of each of the four core histones (H2A, H2B, H3, and H4) form an octamer, around which approximately 146 bp of DNA is wrapped in repeating units, called nucleosomes. The linker histone, H1, interacts with linker DNA between nucleosomes and functions in the compaction of chromatin into higher order structures. This gene is intronless and encodes a replication-dependent histone that is a member of the histone H3 family. Transcripts from this gene lack polyA tails but instead contain a palindromic termination element. This gene is found in the small histone gene cluster on chromosome 6p22-p21.3. [provided by RefSeq, Aug 2015]

**Immunogen**

A synthetic acetyl-peptide corresponding to residues surrounding Lys27 of human Histone H3

**Gene ID**

8356

**Swiss Prot**

P68431

**Synonyms**

H3/j; H3C1; H3C2; H3C3; H3C4; H3C6; H3C7; H3C8; H3FJ; H3C10; H3C11; HIST1H3J

**Reactivity**

Human,Mouse,Rat

**Application**

WB, IHC-P, ICC/IF, FC

**Recommended dilution**WB: 1:5000-1:50000  
IHC-P: 1:1000-1:10000  
ICC/IF: 1:500-1: 5000  
FC: 1:200-1:1000**Calculated MW**

15 kDa

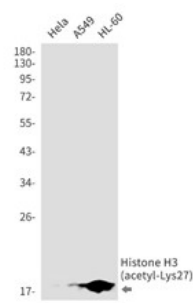
**Observed MW**

17 kDa

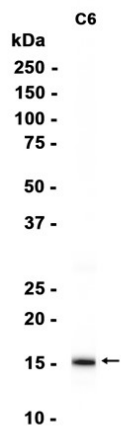
**Host species**

Rabbit

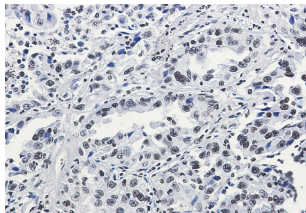
Clonality	Monoclonal
Clonality No.	DGR14746
Isotype	IgG
Purity	Affinity Purification
Conjugation	Un-conjugated
Storage Stability	Store at -20°C. Supplied in 50mM Tris-Glycine(pH 7.4), 0.15M NaCl, 40% Glycerol, 0.01% sodium azide and 0.05% BSA. Stable for 12 months from date of receipt.



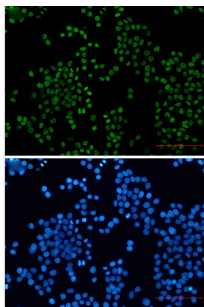
Western blot detection of Histone H3 (acetyl-Lys27) in HeLa,A549,HL-60 cell lysates using Histone H3 (acetyl-Lys27) antibody(1:1000 diluted).



Western blot analysis of extracts from C6 cells using db11759 at 1:1000.



Immunohistochemical analysis of paraffin-embedded human lung cancer using db11759 antibody.



Immunofluorescent analysis of HeLa cells using db11759 antibody (green), and DAPI (blue).