

Recombinant

DGRmAb®

## Anterior Gradient 2 (DGR12035) Rabbit mAb

db11005

Package : 10µL 20µL 50µL 100µL

**Product Name** : Anterior Gradient 2 (DGR12035) Rabbit mAb**Cat.No.:** db11005**Synonyms** : AG2; AG-2; HPC8; GOB-4; HAG-2; XAG-2; PDIA17; HEL-S-116**Application** : WB, IHC-P, ICC/IF, FC, IP**Reactivity** : Human**Host species** : Rabbit**Background**

This gene encodes a member of the disulfide isomerase (PDI) family of endoplasmic reticulum (ER) proteins that catalyze protein folding and thiol-disulfide interchange reactions. The encoded protein has an N-terminal ER-signal sequence, a catalytically active thioredoxin domain, and a C-terminal ER-retention sequence. This protein plays a role in cell migration, cellular transformation and metastasis and is as a p53 inhibitor. As an ER-localized molecular chaperone, it plays a role in the folding, trafficking, and assembly of cysteine-rich transmembrane receptors and the cysteine-rich intestinal glycoprotein mucin. This gene has been implicated in inflammatory bowel disease and cancer progression. [provided by RefSeq, Mar 2017]

**Immunogen**

A synthetic peptide of human Anterior Gradient 2

**Gene ID**

10551

**Swiss Prot**

O95994

**Synonyms**

AG2; AG-2; HPC8; GOB-4; HAG-2; XAG-2; PDIA17; HEL-S-116

**Reactivity**

Human

**Application**

WB, IHC-P, ICC/IF, FC, IP

**Recommended dilution**

WB: 1:1000-1:5000

IHC-P: 1:200-1:500

ICC/IF: 1:100

FC: 1:20-1:50

IP: 1:20

**Calculated MW**

20 kDa

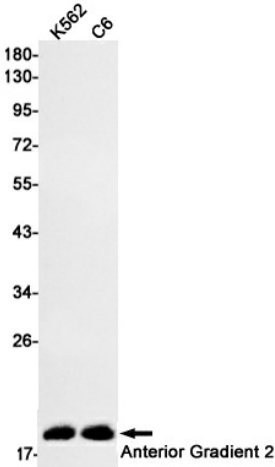
**Observed MW**

18 kDa

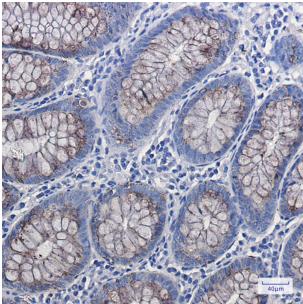
**Host species**

Rabbit

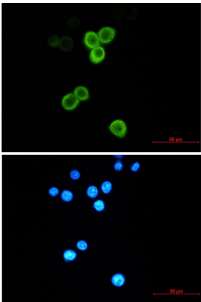
Clonality	Monoclonal
Clonality No.	DGR12035
Isotype	IgG
Purity	Affinity Purification
Conjugation	Un-conjugated
Storage Stability	Store at -20°C. Supplied in 50mM Tris-Glycine(pH 7.4), 0.15M NaCl, 40% Glycerol, 0.01% sodium azide and 0.05% BSA. Stable for 12 months from date of receipt.



Western blot detection of Anterior Gradient 2 in K562,C6 cell lysates using Anterior Gradient 2 antibody(1:1000 diluted).



Immunohistochemical analysis of paraffin-embedded colon using db11005 antibody.



Immunofluorescent analysis of MCF-7 cells using db11005 antibody (green), and DAPI (blue).