

Recombinant

DGRmAb®

Vinculin (DGR12059) Rabbit mAb

db11010

Package : 10µL 20µL 50µL 100µL

Product Name : Vinculin (DGR12059) Rabbit mAb**Cat.No.:** db11010**Synonyms** : MV; MVCL; CMD1W; CMH15; HEL114**Application** : WB, ICC/IF, FC, IP**Reactivity** : Human,Mouse,Rat**Host species** : Rabbit**Background**

Vinculin is a cytoskeletal protein associated with cell-cell and cell-matrix junctions, where it is thought to function as one of several interacting proteins involved in anchoring F-actin to the membrane. Defects in VCL are the cause of cardiomyopathy dilated type 1W. Dilated cardiomyopathy is a disorder characterized by ventricular dilation and impaired systolic function, resulting in congestive heart failure and arrhythmia. Multiple alternatively spliced transcript variants have been found for this gene, but the biological validity of some variants has not been determined. [provided by RefSeq, Jul 2008]

Immunogen

A synthetic peptide of human Vinculin

Gene ID

7414

Swiss Prot

P18206

Synonyms

MV; MVCL; CMD1W; CMH15; HEL114

Reactivity

Human,Mouse,Rat

Application

WB, ICC/IF, FC, IP

Recommended dilution

WB: 1:2000-1:20000

ICC/IF: 1:50-1:200

FC: 1:100-1:200

IP: 1:10-1:100

Calculated MW

124 kDa

Observed MW

124 kDa

Host species

Rabbit

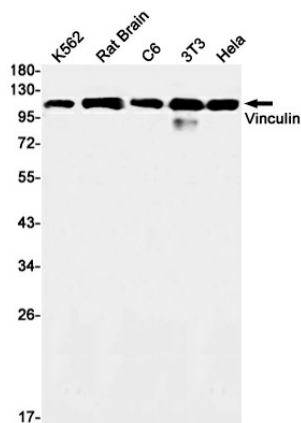
Clonality

Monoclonal

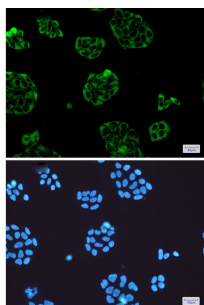
Clonality No.

DGR12059

Isotype	IgG
Purity	Affinity Purification
Conjugation	Un-conjugated
Storage Stability	Store at -20°C. Supplied in 50mM Tris-Glycine(pH 7.4), 0.15M NaCl, 40% Glycerol, 0.01% sodium azide and 0.05% BSA. Stable for 12 months from date of receipt.



Western blot detection of Vinculin in K562, Rat Brain, C6, 3T3, HeLa cell lysates using Vinculin antibody(1:1000 diluted).



Immunofluorescent analysis of HeLa cells using db11010 antibody (green), and DAPI (blue).