

Recombinant

DGRmAb®

VCAM1 (DGR14388) Rabbit mAb

db11080

Package : 10µL 20µL 50µL 100µL

Product Name : VCAM1 (DGR14388) Rabbit mAb**Cat.No.:** db11080**Synonyms :** CD106; INCAM-100**Application :** WB, IHC-P, ICC/IF, FC, IP**Reactivity :** Human,Mouse,Rat**Host species :** Rabbit**Background**

This gene is a member of the Ig superfamily and encodes a cell surface sialoglycoprotein expressed by cytokine-activated endothelium. This type I membrane protein mediates leukocyte-endothelial cell adhesion and signal transduction, and may play a role in the development of atherosclerosis and rheumatoid arthritis. Three alternatively spliced transcripts encoding different isoforms have been described for this gene. [provided by RefSeq, Dec 2010]

Immunogen

A synthetic peptide of mouse VCAM1

Gene ID

7412

Swiss Prot

P19320

Synonyms

CD106; INCAM-100

Reactivity

Human,Mouse,Rat

Application

WB, IHC-P, ICC/IF, FC, IP

Recommended dilution

WB: 1:1000-1:5000

IHC-P: 1:200-1:1000

ICC/IF: 1:100-1:200

FC: 1:20-1:50

IP: 1:20-1:50

Calculated MW

81 kDa

Observed MW

110 kDa

Host species

Rabbit

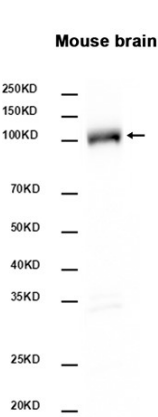
Clonality

Monoclonal

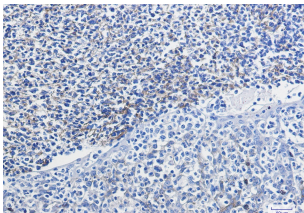
Clonality No.

DGR14388

Isotype	IgG
Purity	Affinity Purification
Conjugation	Un-conjugated
Storage Stability	Store at -20°C. Supplied in 50mM Tris-Glycine(pH 7.4), 0.15M NaCl, 40% Glycerol, 0.01% sodium azide and 0.05% BSA. Stable for 12 months from date of receipt.



Western blot analysis of extracts from Mouse brain tissue using db11080 at 1:2000.



Immunohistochemical analysis of paraffin-embedded human tonsil using db11080 antibody.