

Recombinant

DGRmAb®

Phospho-BRAF (Thr401) (DGR12756) Rabbit mAb

db11119

Package : 10µL 20µL 50µL 100µL

Product Name : Phospho-BRAF (Thr401) (DGR12756) Rabbit mAb**Cat.No.:** db11119**Synonyms** : NS7; B-raf; BRAF1; RAFB1; B-RAF1**Application** : WB**Reactivity** : Human,Mouse,Rat**Host species** : Rabbit**Background**

This gene encodes a protein belonging to the RAF family of serine/threonine protein kinases. This protein plays a role in regulating the MAP kinase/ERK signaling pathway, which affects cell division, differentiation, and secretion. Mutations in this gene, most commonly the V600E mutation, are the most frequently identified cancer-causing mutations in melanoma, and have been identified in various other cancers as well, including non-Hodgkin lymphoma, colorectal cancer, thyroid carcinoma, non-small cell lung carcinoma, hairy cell leukemia and adenocarcinoma of lung. Mutations in this gene are also associated with cardiofaciocutaneous, Noonan, and Costello syndromes, which exhibit overlapping phenotypes. A pseudogene of this gene has been identified on the X chromosome. [provided by RefSeq, Aug 2017]

Immunogen

A synthetic phosphopeptide corresponding to residues surrounding Thr401 of human B Raf

Gene ID

673

Swiss Prot

P15056

Synonyms

NS7; B-raf; BRAF1; RAFB1; B-RAF1

Reactivity

Human,Mouse,Rat

Application

WB

Recommended dilution

WB: 1:1000-1:5000

Calculated MW

84 kDa

Observed MW

84 kDa

Host species

Rabbit

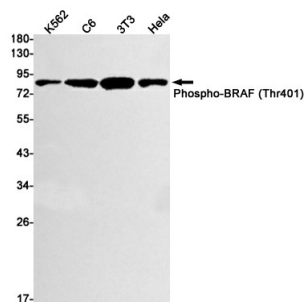
Clonality

Monoclonal

Clonality No.

DGR12756

Isotype	IgG
Purity	Affinity Purification
Conjugation	Un-conjugated
Storage Stability	Store at -20°C. Supplied in 50mM Tris-Glycine(pH 7.4), 0.15M NaCl, 40% Glycerol, 0.01% sodium azide and 0.05% BSA. Stable for 12 months from date of receipt.



Western blot detection of Phospho-BRAF (Thr401) in K562,C6,3T3,HeLa cell lysates using Phospho-BRAF (Thr401) antibody(1:1000 diluted).