

Recombinant

DGRmAb®

ROCK1 (DGR12762) Rabbit mAb

db11120

Package : 10μL 20μL 50μL 100μL

Product Name : ROCK1 (DGR12762) Rabbit mAb**Cat.No.:** db11120**Synonyms :** ROCK-I; P160ROCK**Application :** WB, IHC-P, ICC/IF, FC, IP**Reactivity :** Human,Mouse,Rat**Host species :** Rabbit**Background**

This gene encodes a protein serine/threonine kinase that is activated when bound to the GTP-bound form of Rho. The small GTPase Rho regulates formation of focal adhesions and stress fibers of fibroblasts, as well as adhesion and aggregation of platelets and lymphocytes by shuttling between the inactive GDP-bound form and the active GTP-bound form. Rho is also essential in cytokinesis and plays a role in transcriptional activation by serum response factor. This protein, a downstream effector of Rho, phosphorylates and activates LIM kinase, which in turn, phosphorylates cofilin, inhibiting its actin-depolymerizing activity. A pseudogene, related to this gene, is also located on chromosome 18. [provided by RefSeq, Aug 2015]

Immunogen

A synthetic peptide of human ROCK1

Gene ID

6093

Swiss Prot

Q13464

Synonyms

ROCK-I; P160ROCK

Reactivity

Human,Mouse,Rat

Application

WB, IHC-P, ICC/IF, FC, IP

Recommended dilution

WB: 1:1000-1:5000

IHC-P: 1:50-1:200

ICC/IF: 1:50-1:500

FC: 1:200-1:1000

IP: 1:50

Calculated MW

158 kDa

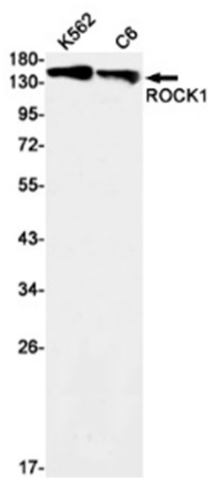
Observed MW

158 kDa

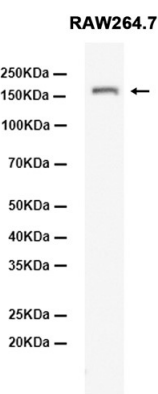
Host species

Rabbit

Clonality	Monoclonal
Clonality No.	DGR12762
Isotype	IgG
Purity	Affinity Purification
Conjugation	Un-conjugated
Storage Stability	Store at -20°C. Supplied in 50mM Tris-Glycine(pH 7.4), 0.15M NaCl, 40% Glycerol, 0.01% sodium azide and 0.05% BSA. Stable for 12 months from date of receipt.



Western blot detection of ROCK1 in K562,C6 cell lysates using ROCK1 antibody (1:1000 diluted).



Western blot analysis of extracts from RAW264.7 cells using db11120 at 1:1000.