

Recombinant

DGRmAb®

**Phospho-PKC alpha (Thr638) (DGR12773) Rabbit mAb**

db11122

Package : 10µL 20µL 50µL 100µL

**Product Name** : Phospho-PKC alpha (Thr638) (DGR12773) Rabbit mAb**Cat.No.:** db11122**Synonyms** : AAG6; PKCA; PRKACA; PKC-alpha**Application** : WB, IHC-P**Reactivity** : Human,Mouse,Rat**Host species** : Rabbit**Background**

Protein kinase C (PKC) is a family of serine- and threonine-specific protein kinases that can be activated by calcium and the second messenger diacylglycerol. PKC family members phosphorylate a wide variety of protein targets and are known to be involved in diverse cellular signaling pathways. PKC family members also serve as major receptors for phorbol esters, a class of tumor promoters. Each member of the PKC family has a specific expression profile and is believed to play a distinct role in cells. The protein encoded by this gene is one of the PKC family members. This kinase has been reported to play roles in many different cellular processes, such as cell adhesion, cell transformation, cell cycle checkpoint, and cell volume control. Knockout studies in mice suggest that this kinase may be a fundamental regulator of cardiac contractility and Ca(2+) handling in myocytes. [provided by RefSeq, Jul 2008]

**Immunogen**

A synthetic phosphopeptide corresponding to residues surrounding Thr638 of human PKC alpha

**Gene ID**

5578

**Swiss Prot**

P17252

**Synonyms**

AAG6; PKCA; PRKACA; PKC-alpha

**Reactivity**

Human,Mouse,Rat

**Application**

WB, IHC-P

**Recommended dilution**

WB: 1:2000-1:20000

IHC-P: 1:100-1:200

**Calculated MW**

77 kDa

**Observed MW**

80 kDa

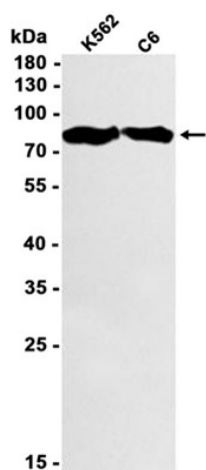
**Host species**

Rabbit

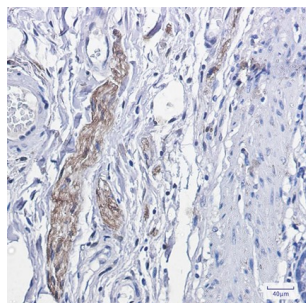
**Clonality**

Monoclonal

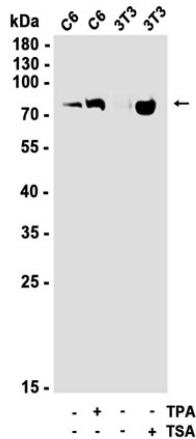
<b>Clonality No.</b>	DGR12773
<b>Isotype</b>	IgG
<b>Purity</b>	Affinity Purification
<b>Conjugation</b>	Un-conjugated
<b>Storage Stability</b>	Store at -20°C. Supplied in 50mM Tris-Glycine(pH 7.4), 0.15M NaCl, 40% Glycerol, 0.01% sodium azide and 0.05% BSA. Stable for 12 months from date of receipt.



Western blot analysis of extracts from K562, C6 cells using db11122 at 1:1000.



Immunohistochemical analysis of paraffin-embedded human colon cancer using db11122 antibody.



Western blot analysis of extracts from various cell lines, untreated ( ) or treated (+) as indicated with TPA or TSA, using db11122 at 1000.