

Recombinant

DGRmAb®

Phospho-CREB (Ser133) (DGR12894) Rabbit mAb

db11133

Package : 10µL 20µL 50µL 100µL

Product Name : Phospho-CREB (Ser133) (DGR12894) Rabbit mAb

Cat.No.: db11133

Synonyms : CREB; CREB-1

Application : WB, IHC-P, ICC/IF, FC, IP

Reactivity : Human,Mouse,Rat

Host species : Rabbit

Background

This gene encodes a transcription factor that is a member of the leucine zipper family of DNA binding proteins. This protein binds as a homodimer to the cAMP-responsive element, an octameric palindrome. The protein is phosphorylated by several protein kinases, and induces transcription of genes in response to hormonal stimulation of the cAMP pathway. Alternate splicing of this gene results in several transcript variants encoding different isoforms. [provided by RefSeq, Mar 2016]

Immunogen

A synthetic phosphopeptide corresponding to residues surrounding Ser133 of human CREB

Gene ID

1385

Swiss Prot

P16220

Synonyms

CREB; CREB-1

Reactivity

Human,Mouse,Rat

Application

WB, IHC-P, ICC/IF, FC, IP

Recommended dilution

WB: 1:1000-1:5000
 IHC-P: 1:100-1:1000
 ICC/IF: 1:100-1:200
 FC: 1:50-1:100
 IP: 1:20-1:100

Calculated MW

37 kDa

Observed MW

43 kDa

Host species

Rabbit

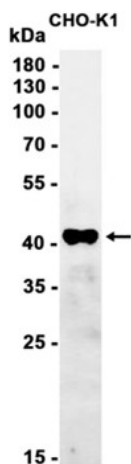
Clonality

Monoclonal

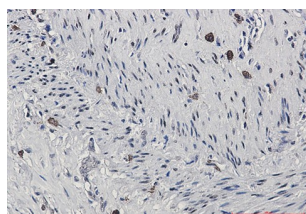
Clonality No.

DGR12894

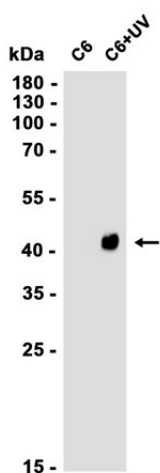
Isotype	IgG
Purity	Affinity Purification
Conjugation	Un-conjugated
Storage Stability	Store at -20°C. Supplied in 50mM Tris-Glycine(pH 7.4), 0.15M NaCl, 40% Glycerol, 0.01% sodium azide and 0.05% BSA. Stable for 12 months from date of receipt.



Western blot analysis of extracts from CHO-K1 cells using db11133 at 1:500.



Immunohistochemical analysis of paraffin-embedded human lung cancer using db11133 antibody.



Western blot analysis of extracts from C6, C6+UV cells using db11133 at 1:1000.