

Recombinant

DGRmAb®

Phospho-MSK1 (Ser376) (DGR12909) Rabbit mAb

db11134

Package : 10μL 20μL 50μL 100μL

Product Name : Phospho-MSK1 (Ser376) (DGR12909) Rabbit mAb**Cat.No.:** db11134**Synonyms** : MSK1; RLPK; MSPK1**Application** : WB, IHC-P, ICC/IF**Reactivity** : Human,Rat**Host species** : Rabbit**Background**

Serine/threonine-protein kinase that is required for the mitogen or stress-induced phosphorylation of the transcription factors CREB1 and ATF1 and for the regulation of the transcription factors RELA, STAT3 and ETV1/ER81, and that contributes to gene activation by histone phosphorylation and functions in the regulation of inflammatory genes. Phosphorylates CREB1 and ATF1 in response to mitogenic or stress stimuli such as UV-C irradiation, epidermal growth factor (EGF) and anisomycin.

Immunogen

A synthetic phosphopeptide corresponding to residues surrounding Ser376 of human MSK1

Gene ID

9252

Swiss Prot

O75582

Synonyms

MSK1; RLPK; MSPK1

Reactivity

Human,Rat

Application

WB, IHC-P, ICC/IF

Recommended dilution

WB: 1:1000-1:5000

IHC-P: 1:50

ICC/IF: 1:200-1:500

Calculated MW

90 kDa

Observed MW

90 kDa

Host species

Rabbit

Clonality

Monoclonal

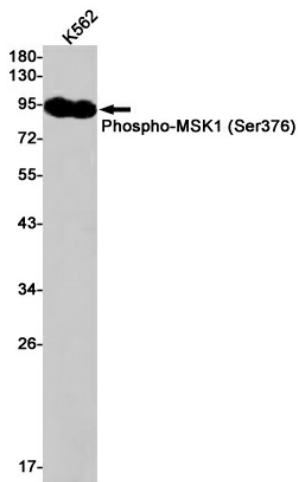
Clonality No.

DGR12909

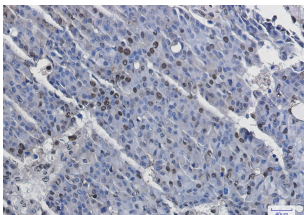
Isotype

IgG

Purity	Affinity Purification
Conjugation	Un-conjugated
Storage Stability	Store at -20°C. Supplied in 50mM Tris-Glycine(pH 7.4), 0.15M NaCl, 40% Glycerol, 0.01% sodium azide and 0.05% BSA. Stable for 12 months from date of receipt.



Western blot detection of Phospho-MSK1 (Ser376) in K562 cell lysates using Phospho-MSK1 (Ser376) antibody(1:1000 diluted).



Immunohistochemical analysis of paraffin-embedded human breast cancer using db11134 antibody.