

Recombinant

DGRmAb®

## CD146 (DGR12926) Rabbit mAb

db11170

Package : 10µL 20µL 50µL 100µL

**Product Name :** CD146 (DGR12926) Rabbit mAb**Cat.No.:** db11170**Synonyms :** CD146; MUC18**Application :** WB, IHC-P, ICC/IF, FC**Reactivity :** Human,Mouse,Rat**Host species :** Rabbit**Background**

Plays a role in cell adhesion, and in cohesion of the endothelial monolayer at intercellular junctions in vascular tissue. Its expression may allow melanoma cells to interact with cellular elements of the vascular system, thereby enhancing hematogeneous tumor spread. Could be an adhesion molecule active in neural crest cells during embryonic development. Acts as surface receptor that triggers tyrosine phosphorylation of FYN and PTK2/FAK1, and a transient increase in the intracellular calcium concentration.

**Immunogen**

A synthetic peptide of human CD146

**Gene ID**

4162

**Swiss Prot**

P43121

**Synonyms**

CD146; MUC18

**Reactivity**

Human,Mouse,Rat

**Application**

WB, IHC-P, ICC/IF, FC

**Recommended dilution**WB: 1:1000  
IHC-P: 1:200-1:500  
ICC/IF: 1:100-1:200  
FC: 1:20-1:100**Calculated MW**

72 kDa

**Observed MW**

120 kDa

**Host species**

Rabbit

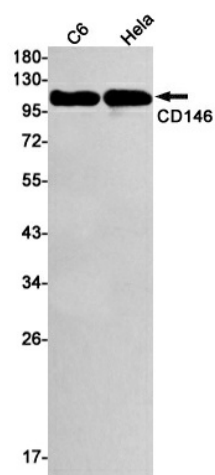
**Clonality**

Monoclonal

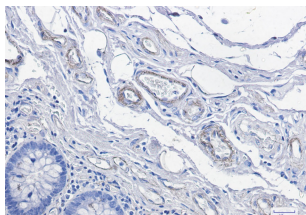
**Clonality No.**

DGR12926

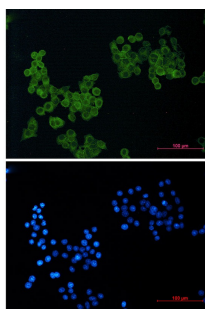
Isotype	IgG
Purity	Affinity Purification
Conjugation	Un-conjugated
Storage Stability	Store at -20°C. Supplied in 50mM Tris-Glycine(pH 7.4), 0.15M NaCl, 40% Glycerol, 0.01% sodium azide and 0.05% BSA. Stable for 12 months from date of receipt.



Western blot detection of CD146 in C6,HeLa cell lysates using CD146 antibody(1:1000 diluted).



Immunohistochemical analysis of paraffin-embedded human colon cancer tissue using db11170 antibody.



Immunofluorescent analysis of HeLa cells using db11170 antibody (green), and DAPI (blue).