

Recombinant

DGRmAb®

**alpha B Crystallin (DGR12950) Rabbit mAb**

db11173

Package : 10µL 20µL 50µL 100µL

**Product Name** : alpha B Crystallin (DGR12950) Rabbit mAb**Cat.No.:** db11173**Synonyms** : MFM2; CRYA2; CTPP2; HSPB5; CMD1II; CTRCT16; HEL-S-101**Application** : WB, IHC-P, ICC/IF, IP**Reactivity** : Human,Rat**Host species** : Rabbit**Background**

Mammalian lens crystallins are divided into alpha, beta, and gamma families. Alpha crystallins are composed of two gene products: alpha-A and alpha-B, for acidic and basic, respectively. Alpha crystallins can be induced by heat shock and are members of the small heat shock protein (HSP20) family. They act as molecular chaperones although they do not renature proteins and release them in the fashion of a true chaperone; instead they hold them in large soluble aggregates. Post-translational modifications decrease the ability to chaperone. These heterogeneous aggregates consist of 30-40 subunits; the alpha-A and alpha-B subunits have a 3:1 ratio, respectively. Two additional functions of alpha crystallins are an autokinase activity and participation in the intracellular architecture. The encoded protein has been identified as a moonlighting protein based on its ability to perform mechanistically distinct functions. Alpha-A and alpha-B gene products are differentially expressed; alpha-A is preferentially restricted to the lens and alpha-B is expressed widely in many tissues and organs. Elevated expression of alpha-B crystallin occurs in many neurological diseases; a missense mutation cosegregated in a family with a desmin-related myopathy. Alternative splicing results in multiple transcript variants. [provided by RefSeq, Jan 2014]

**Immunogen**

A synthetic peptide of human Alpha B Crystallin

**Gene ID**

1410

**Swiss Prot**

P02511

**Synonyms**

MFM2; CRYA2; CTPP2; HSPB5; CMD1II; CTRCT16; HEL-S-101

**Reactivity**

Human,Rat

**Application**

WB, IHC-P, ICC/IF, IP

**Recommended dilution**

WB: 1:1000

IHC-P: 1:100-1:200

ICC/IF: 1:100-1:200

IP: 1:100-1:200

**Calculated MW**

20 kDa

**Observed MW**

22 kDa

**Host species**

Rabbit

**Clonality**

Monoclonal

**Clonality No.**

DGR12950

**Isotype**

IgG

**Purity**

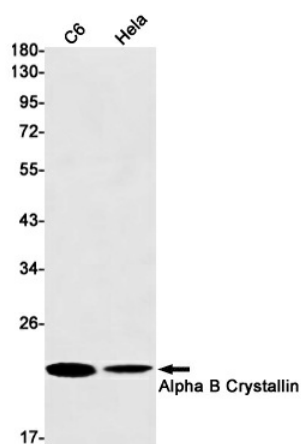
Affinity Purification

**Conjugation**

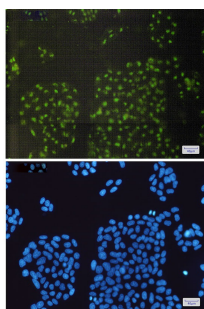
Un-conjugated

**Storage Stability**

Store at -20°C. Supplied in 50mM Tris-Glycine(pH 7.4), 0.15M NaCl, 40% Glycerol, 0.01% sodium azide and 0.05% BSA. Stable for 12 months from date of receipt.



Western blot detection of Alpha B Crystallin in C6, HeLa cell lysates using Alpha B Crystallin antibody (1:1000 diluted).



Immunofluorescent analysis of HeLa cells using db11173 antibody (green), and DAPI (blue).