

Recombinant

DGRmAb®

CD166 (DGR13056) Rabbit mAb

db11186

Package : 10µL 20µL 50µL 100µL

Product Name : CD166 (DGR13056) Rabbit mAb**Cat.No.:** db11186**Synonyms :** MEMD; CD166**Application :** WB, IHC-P, ICC/IF, FC, IP**Reactivity :** Human,Mouse,Rat**Host species :** Rabbit**Background**

This gene encodes activated leukocyte cell adhesion molecule (ALCAM), also known as CD166 (cluster of differentiation 166), which is a member of a subfamily of immunoglobulin receptors with five immunoglobulin-like domains (VVC2C2C2) in the extracellular domain. This protein binds to T-cell differentiation antigen CD6, and is implicated in the processes of cell adhesion and migration. Multiple alternatively spliced transcript variants encoding different isoforms have been found. [provided by RefSeq, Aug 2011]

Immunogen

A synthetic peptide of human CD166

Gene ID

214

Swiss Prot

Q13740

Synonyms

MEMD; CD166

Reactivity

Human,Mouse,Rat

Application

WB, IHC-P, ICC/IF, FC, IP

Recommended dilution

WB: 1:2000-1:20000

IHC-P: 1:50

ICC/IF: 1:50-1:200

FC: 1:50-1:100

IP: 1:20-1:50

Calculated MW

65 kDa

Observed MW

105 kDa

Host species

Rabbit

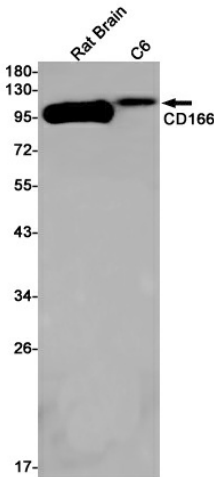
Clonality

Monoclonal

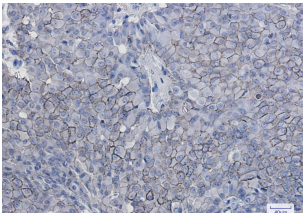
Clonality No.

DGR13056

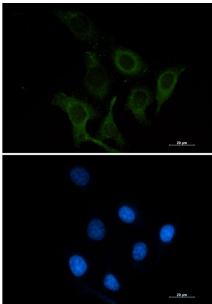
Isotype	IgG
Purity	Affinity Purification
Conjugation	Un-conjugated
Storage Stability	Store at -20°C. Supplied in 50mM Tris-Glycine(pH 7.4), 0.15M NaCl, 40% Glycerol, 0.01% sodium azide and 0.05% BSA. Stable for 12 months from date of receipt.



Western blot detection of CD166 in Rat Brain,C6 cell lysates using CD166 antibody(1:1000 diluted).



Immunohistochemical analysis of paraffin-embedded human breast cancer using db11186 antibody.



Immunofluorescent analysis of SKOV-3 cells using db11186 antibody (green), and DAPI (blue).