

Recombinant

DGRmAb®

DDX5 (DGR19321) Rabbit mAb

db11221

Package : 10µL 20µL 50µL 100µL

Product Name : DDX5 (DGR19321) Rabbit mAb**Cat.No.:** db11221**Synonyms :** p68; HLR1; G17P1; HUMP68**Application :** WB, IHC-P, ICC/IF, FC, IP**Reactivity :** Human,Mouse,Rat**Host species :** Rabbit**Background**

This gene encodes a member of the DEAD box family of RNA helicases that are involved in a variety of cellular processes as a result of its role as an adaptor molecule, promoting interactions with a large number of other factors. This protein is involved in pathways that include the alteration of RNA structures, plays a role as a coregulator of transcription, a regulator of splicing, and in the processing of small noncoding RNAs. Members of this family contain nine conserved motifs, including the conserved Asp-Glu-Ala-Asp (DEAD) motif, important to ATP binding and hydrolysis as well as RNA binding and unwinding activities. Dysregulation of this gene may play a role in cancer development. Alternative splicing results in multiple transcript variants. [provided by RefSeq, Sep 2017]

Immunogen

A synthetic peptide of human DDX5

Gene ID

1655

Swiss Prot

P17844

Synonyms

p68; HLR1; G17P1; HUMP68

Reactivity

Human,Mouse,Rat

Application

WB, IHC-P, ICC/IF, FC, IP

Recommended dilution

WB: 1:2000-1:20000

IHC-P: 1:200-1:500

ICC/IF: 1:100-1:200

FC: 1:100-1:200

IP: 1:10-1:100

Calculated MW

69 kDa

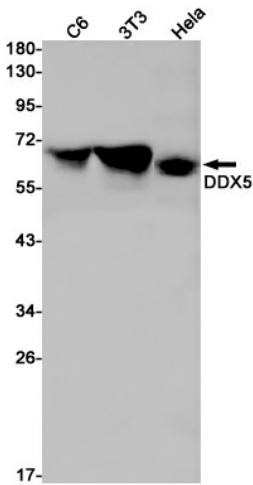
Observed MW

69 kDa

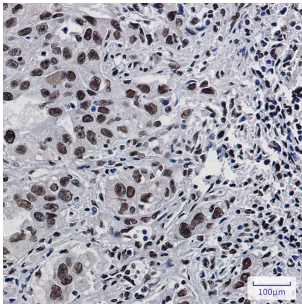
Host species

Rabbit

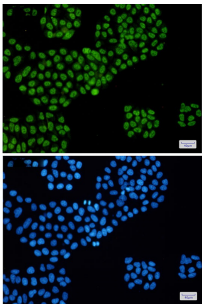
Clonality	Monoclonal
Clonality No.	DGR19321
Isotype	IgG
Purity	Affinity Purification
Conjugation	Un-conjugated
Storage Stability	Store at -20°C. Supplied in 50mM Tris-Glycine(pH 7.4), 0.15M NaCl, 40% Glycerol, 0.01% sodium azide and 0.05% BSA. Stable for 12 months from date of receipt.



Western blot detection of DDX5 in C6,3T3,HeLa cell lysates using DDX5 antibody(1:1000 diluted).



Immunohistochemical analysis of paraffin-embedded human lung cancer using db11221 antibody.



Immunofluorescent analysis of HeLa cells using db11221 antibody (green), and DAPI (blue).