

Recombinant

DGRmAb®

**Phospho-PAK1/2/3 (Ser144/Ser141/Ser154) (DGR19432) Rabbit mAb**

db11225

Package : 10µL 20µL 50µL 100µL

**Product Name** : Phospho-PAK1/2/3 (Ser144/Ser141/Ser154) (DGR19432) Rabbit mAb**Cat.No.:** db11225**Synonyms** : PAKalpha**Application** : WB, IHC-P, ICC/IF, FC, IP**Reactivity** : Human,Mouse,Rat**Host species** : Rabbit**Background**

This gene encodes a family member of serine/threonine p21-activating kinases, known as PAK proteins. These proteins are critical effectors that link RhoGTPases to cytoskeleton reorganization and nuclear signaling, and they serve as targets for the small GTP binding proteins Cdc42 and Rac. This specific family member regulates cell motility and morphology. Alternatively spliced transcript variants encoding different isoforms have been found for this gene. [provided by RefSeq, Apr 2010]

**Immunogen**

A synthetic phosphopeptide corresponding to residues surrounding Ser144 of human PAK1

**Gene ID**

5058

**Swiss Prot**

O75914

**Synonyms**

PAKalpha

**Reactivity**

Human,Mouse,Rat

**Application**

WB, IHC-P, ICC/IF, FC, IP

**Recommended dilution**

WB: 1:2000-1:20000

IHC-P: 1:100-1:500

ICC/IF: 1:200-1:500

FC: 1:100

IP: 1:20-1:50

**Calculated MW**

61 kDa

**Observed MW**

61 kDa

**Host species**

Rabbit

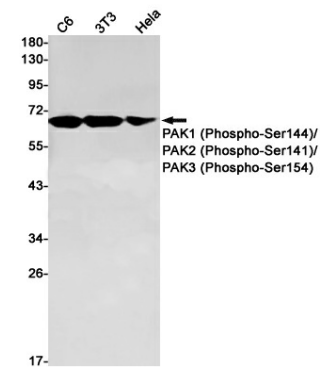
**Clonality**

Monoclonal

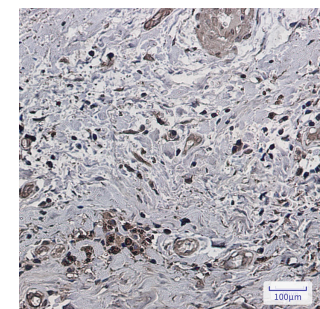
**Clonality No.**

DGR19432

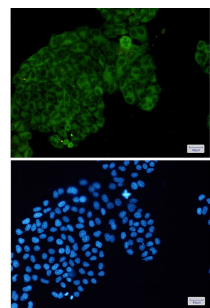
Isotype	IgG
Purity	Affinity Purification
Conjugation	Un-conjugated
Storage Stability	Store at -20°C. Supplied in 50mM Tris-Glycine(pH 7.4), 0.15M NaCl, 40% Glycerol, 0.01% sodium azide and 0.05% BSA. Stable for 12 months from date of receipt.



Western blot detection of PAK1 (Phospho-Ser144)/PAK2 (Phospho-Ser141)/PAK3 (Phospho-Ser154) in C6,3T3,HeLa cell lysates using PAK1 (Phospho-Ser144)/PAK2 (Phospho-Ser141)/PAK3 (Phospho-Ser154) antibody(1:1000 diluted).



Immunohistochemical analysis of paraffin-embedded human breast cancer using db11225 antibody.



Immunofluorescent analysis of HeLa cells using db11225 antibody (green), and DAPI (blue).