

Recombinant

DGRmAb®

ASH2L (DGR19470) Rabbit mAb

db11227

Package : 10µL 20µL 50µL 100µL

Product Name : ASH2L (DGR19470) Rabbit mAb**Cat.No.:** db11227**Synonyms** : ASH2; Bre2; ASH2L1; ASH2L2**Application** : WB, IHC-P, ICC/IF, FC**Reactivity** : Human,Mouse,Rat**Host species** : Rabbit**Background**

Component of the Set1/Ash2 histone methyltransferase (HMT) complex, a complex that specifically methylates 'Lys-4' of histone H3, but not if the neighboring 'Lys-9' residue is already methylated. As part of the MLL1/MLL complex it is involved in methylation and dimethylation at 'Lys-4' of histone H3. May function as a transcriptional regulator. May play a role in hematopoiesis.

Immunogen

A synthetic peptide of human ASH2L

Gene ID

9070

Swiss Prot

Q9UBL3

Synonyms

ASH2; Bre2; ASH2L1; ASH2L2

Reactivity

Human,Mouse,Rat

Application

WB, IHC-P, ICC/IF, FC

Recommended dilution

WB: 1:2000-1:20000

IHC-P: 1:50-1:100

ICC/IF: 1:100-1:200

FC: 1:200-1:1000

Calculated MW

69 kDa

Observed MW

80 kDa

Host species

Rabbit

Clonality

Monoclonal

Clonality No.

DGR19470

Isotype

IgG

Purity

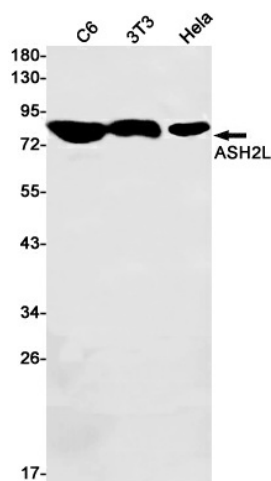
Affinity Purification

Conjugation

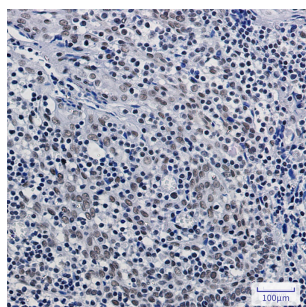
Un-conjugated

Storage Stability

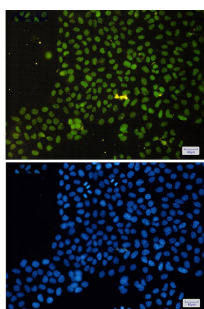
Store at -20°C. Supplied in 50mM Tris-Glycine(pH 7.4), 0.15M NaCl, 40% Glycerol, 0.01% sodium azide and 0.05% BSA. Stable for 12 months from date of receipt.



Western blot detection of ASH2L in C6,3T3,HeLa cell lysates using ASH2L antibody(1:1000 diluted).



Immunohistochemical analysis of paraffin-embedded human tonsil using db11227 antibody.



Immunofluorescent analysis of HeLa cells using db11227 antibody (green), and DAPI (blue).