

Recombinant

DGRmAb®

**Smad5 (DGR19504) Rabbit mAb**

db11228

Package : 10µL 20µL 50µL 100µL

**Product Name** : Smad5 (DGR19504) Rabbit mAb**Cat.No.:** db11228**Synonyms** : DWFC; JV5-1; MADH5**Application** : WB, IHC-P, ICC/IF, FC**Reactivity** : Human,Mouse,Rat**Host species** : Rabbit**Background**

The protein encoded by this gene is involved in the transforming growth factor beta signaling pathway that results in an inhibition of the proliferation of hematopoietic progenitor cells. The encoded protein is activated by bone morphogenetic proteins type 1 receptor kinase, and may be involved in cancer. Alternative splicing results in multiple transcript variants. [provided by RefSeq, Feb 2014]

**Immunogen**

A synthetic peptide of human SMAD5

**Gene ID**

4090

**Swiss Prot**

Q99717

**Synonyms**

DWFC; JV5-1; MADH5

**Reactivity**

Human,Mouse,Rat

**Application**

WB, IHC-P, ICC/IF, FC

**Recommended dilution**

WB: 1:1000-1:5000

IHC-P: 1:50

ICC/IF: 1:50-1:100

FC: 1:20-1:100

**Calculated MW**

52 kDa

**Observed MW**

60 kDa

**Host species**

Rabbit

**Clonality**

Monoclonal

**Clonality No.**

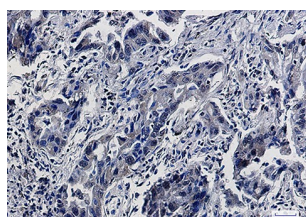
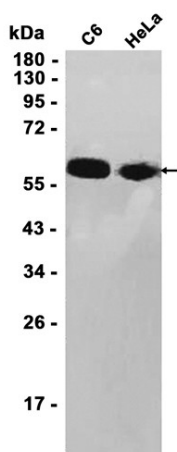
DGR19504

**Isotype**

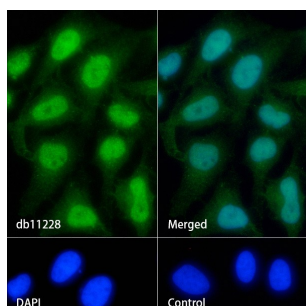
IgG

<b>Purity</b>	Affinity Purification
<b>Conjugation</b>	Un-conjugated
<b>Storage Stability</b>	Store at -20°C. Supplied in 50mM Tris-Glycine(pH 7.4), 0.15M NaCl, 40% Glycerol, 0.01% sodium azide and 0.05% BSA. Stable for 12 months from date of receipt.

Western blot analysis of extracts from C6, HeLa cells using db11228 at 1:1000.



Immunohistochemical analysis of paraffin-embedded human lung cancer using db11228 antibody.



Immunofluorescence analysis of HeLa cells labelling Smad5 with db11228.

The cells were fixed with 4% PFA (10min, RT) followed by treatment with 0.1% Triton X-100 (10min, RT), and blocked in 1% BSA/10% normal goat serum/0.3M glycine in 0.1% PBS-Tween 20 for 1h. The cells were then incubate with db11228 (1:50) at room temperature for 1h, followed by a further incubation at room temperature for 45min with Goat Anti Rabbit IgG (H+L)-AF488 (db10005, shown in green). Nuclear DNA was labeled in blue with DAPI.

Control: Secondary antibody only.