

Recombinant

DGRmAb®

Adenosine A1 Receptor (DGR19625) Rabbit mAb

db11239

Package : 10µL 20µL 50µL 100µL

Product Name : Adenosine A1 Receptor (DGR19625) Rabbit mAb**Cat.No.:** db11239**Synonyms** : RDC7**Application** : WB, IHC-P, ICC/IF, FC, IP**Reactivity** : Human,Mouse,Rat**Host species** : Rabbit**Background**

The protein encoded by this gene is an adenosine receptor that belongs to the G-protein coupled receptor 1 family. There are 3 types of adenosine receptors, each with a specific pattern of ligand binding and tissue distribution, and together they regulate a diverse set of physiologic functions. The type A1 receptors inhibit adenylyl cyclase, and play a role in the fertilization process. Animal studies also suggest a role for A1 receptors in kidney function and ethanol intoxication. Transcript variants with alternative splicing in the 5' UTR have been found for this gene. [provided by RefSeq, Jul 2008]

Immunogen

A synthetic peptide of human Adenosine A1 Receptor

Gene ID

134

Swiss Prot

P30542

Synonyms

RDC7

Reactivity

Human,Mouse,Rat

Application

WB, IHC-P, ICC/IF, FC, IP

Recommended dilution

WB: 1:1000-1:5000

IHC-P: 1:100-1:1000

ICC/IF: 1:50-1:100

FC: 1:100-1:1000

IP: 1:20-1:100

Calculated MW

37 kDa

Observed MW

37 kDa

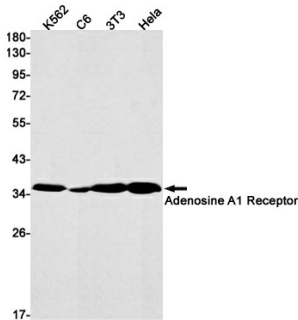
Host species

Rabbit

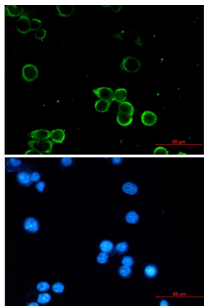
Clonality

Monoclonal

Clonality No.	DGR19625
Isotype	IgG
Purity	Affinity Purification
Conjugation	Un-conjugated
Storage Stability	Store at -20°C. Supplied in 50mM Tris-Glycine(pH 7.4), 0.15M NaCl, 40% Glycerol, 0.01% sodium azide and 0.05% BSA. Stable for 12 months from date of receipt.



Western blot detection of Adenosine A1 Receptor in K562,C6,3T3,Hela cell lysates using Adenosine A1 Receptor antibody(1:1000 diluted).



Immunofluorescent analysis of MCF-7 cells using db11239 antibody (green), and DAPI (blue).