

Recombinant

DGRmAb®

## Annexin A2 (DGR19811) Rabbit mAb

db11251

Package : 10μL 20μL 50μL 100μL

**Product Name** : Annexin A2 (DGR19811) Rabbit mAb**Cat.No.:** db11251**Synonyms** : P36; ANX2; LIP2; LPC2; CAL1H; LPC2D; ANX2L4; PAP-IV; HEL-S-270**Application** : WB, IHC-P, ICC/IF, FC**Reactivity** : Human,Mouse,Rat**Host species** : Rabbit**Background**

This gene encodes a member of the annexin family. Members of this calcium-dependent phospholipid-binding protein family play a role in the regulation of cellular growth and in signal transduction pathways. This protein functions as an autocrine factor which heightens osteoclast formation and bone resorption. This gene has three pseudogenes located on chromosomes 4, 9 and 10, respectively. Multiple alternatively spliced transcript variants encoding different isoforms have been found for this gene. [provided by RefSeq, Jul 2008]

**Immunogen**

A synthetic peptide of human Annexin A2

**Gene ID**

302

**Swiss Prot**

P07355

**Synonyms**

P36; ANX2; LIP2; LPC2; CAL1H; LPC2D; ANX2L4; PAP-IV; HEL-S-270

**Reactivity**

Human,Mouse,Rat

**Application**

WB, IHC-P, ICC/IF, FC

**Recommended dilution**

WB: 1:1000-1:10000

IHC-P: 1:50-1:100

ICC/IF: 1:100-1:200

FC: 1:10-1:100

**Calculated MW**

39 kDa

**Observed MW**

38 kDa

**Host species**

Rabbit

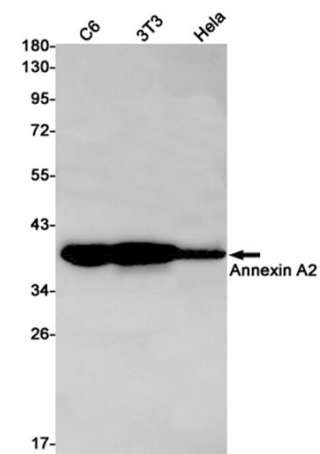
**Clonality**

Monoclonal

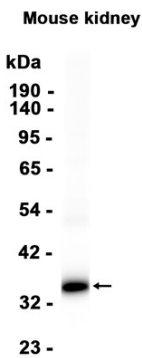
**Clonality No.**

DGR19811

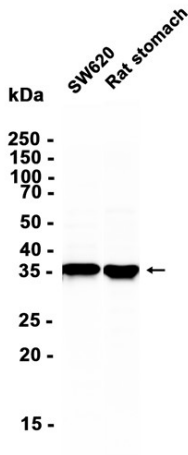
Isotype	IgG
Purity	Affinity Purification
Conjugation	Un-conjugated
Storage Stability	Store at -20°C. Supplied in 50mM Tris-Glycine(pH 7.4), 0.15M NaCl, 40% Glycerol, 0.01% sodium azide and 0.05% BSA. Stable for 12 months from date of receipt.



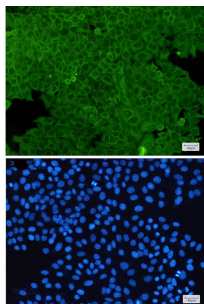
Western blot detection of Annexin A2 in C6,3T3,Hela cell lysates using Annexin A2 antibody(1:1000 diluted).



Western blot analysis of extracts from Mouse kidney tissue using db11251 at 1:1000.



Western blot analysis of extracts from SW620 cells and Rat stomach tissue using db11251 at 1:1000.



Immunofluorescent analysis of HeLa cells using db11251 antibody (green), and DAPI (blue).