

Recombinant

DGRmAb®

APE1 (DGR19894) Rabbit mAb

db11254

Package : 10µL 20µL 50µL 100µL

Product Name : APE1 (DGR19894) Rabbit mAb**Cat.No.:** db11254**Synonyms** : APE; APX; APE1; APEN; APEX; HAP1; REF1**Application** : WB, IHC-P**Reactivity** : Human,Mouse,Rat**Host species** : Rabbit**Background**

Apurinic/aprimidinic (AP) sites occur frequently in DNA molecules by spontaneous hydrolysis, by DNA damaging agents or by DNA glycosylases that remove specific abnormal bases. AP sites are pre-mutagenic lesions that can prevent normal DNA replication so the cell contains systems to identify and repair such sites. Class II AP endonucleases cleave the phosphodiester backbone 5' to the AP site. This gene encodes the major AP endonuclease in human cells. Splice variants have been found for this gene; all encode the same protein. [provided by RefSeq, Jul 2008]

Immunogen

A synthetic peptide of human APE1

Gene ID

328

Swiss Prot

P27695

Synonyms

APE; APX; APE1; APEN; APEX; HAP1; REF1

Reactivity

Human,Mouse,Rat

Application

WB, IHC-P

Recommended dilution

WB: 1:2000-1:20000

IHC-P: 1:100-1:200

Calculated MW

36 kDa

Observed MW

36 kDa

Host species

Rabbit

Clonality

Monoclonal

Clonality No.

DGR19894

Isotype

IgG

Purity

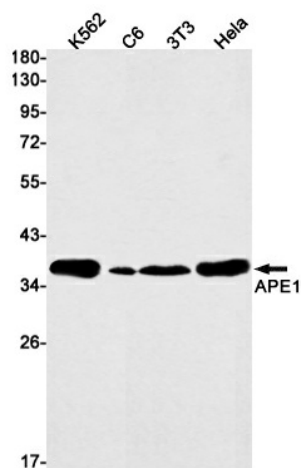
Affinity Purification

Conjugation

Un-conjugated

Storage Stability

Store at -20°C. Supplied in 50mM Tris-Glycine(pH 7.4), 0.15M NaCl, 40% Glycerol, 0.01% sodium azide and 0.05% BSA. Stable for 12 months from date of receipt.



Western blot detection of APE1 in K562, C6, 3T3, HeLa cell lysates using APE1 antibody(1:1000 diluted).