

Recombinant

DGRmAb®

IKB beta (DGR19895) Rabbit mAb

db11257

Package : 10µL 20µL 50µL 100µL

Product Name : IKB beta (DGR19895) Rabbit mAb**Cat.No.:** db11257**Synonyms :** IKBB; TRIP9**Application :** WB, IHC-P, ICC/IF, FC, IP**Reactivity :** Human**Host species :** Rabbit**Background**

The protein encoded by this gene belongs to the NF-kappa-B inhibitor family, which inhibit NF-kappa-B by complexing with, and trapping it in the cytoplasm. Phosphorylation of serine residues on these proteins by kinases marks them for destruction via the ubiquitination pathway, thereby allowing activation of the NF-kappa-B, which translocates to the nucleus to function as a transcription factor. Alternatively spliced transcript variants have been found for this gene.[provided by RefSeq, Jul 2011]

Immunogen

A synthetic peptide of human IKB beta

Gene ID

4793

Swiss Prot

Q15653

Synonyms

IKBB; TRIP9

Reactivity

Human

Application

WB, IHC-P, ICC/IF, FC, IP

Recommended dilution

WB: 1:1000-1:5000

IHC-P: 1:200-1:500

ICC/IF: 1:50

FC: 1:20-1:50

IP: 1:10-1:100

Calculated MW

38 kDa

Observed MW

48 kDa

Host species

Rabbit

Clonality

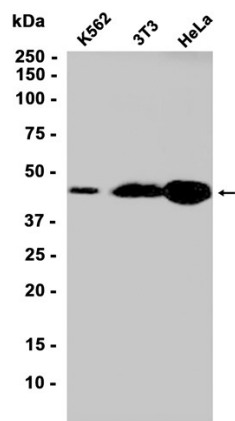
Monoclonal

Clonality No.

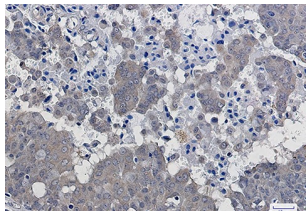
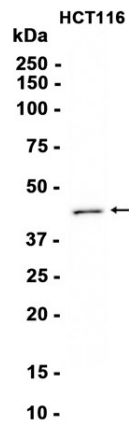
DGR19895

Isotype	IgG
Purity	Affinity Purification
Conjugation	Un-conjugated
Storage Stability	Store at -20°C. Supplied in 50mM Tris-Glycine(pH 7.4), 0.15M NaCl, 40% Glycerol, 0.01% sodium azide and 0.05% BSA. Stable for 12 months from date of receipt.

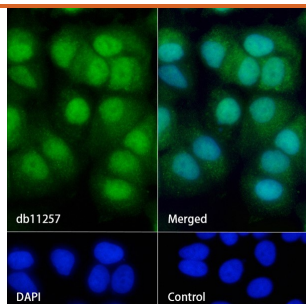
Western blot analysis of extracts from K562, 3T3, HeLa cells using db11257 at 1:1000.



Western blot analysis of extracts from HCT116 cells using db11257 at 1:1000.



Immunohistochemical analysis of paraffin-embedded human breast cancer using db11257 antibody.



Immunofluorescence analysis of MCF-7 cells labelling IKB beta with db11257.

The cells were fixed with 4% PFA (10min, RT) followed by treatment with 0.1% Triton X-100 (10min, RT), and blocked in 1% BSA/10% normal goat serum/0.3M glycine in 0.1% PBS-Tween 20 for 1h. The cells were then incubate with db11257 (1:50) at room temprature for 1h, followed by a further incubation at room temperature for 45min with Goat Anti Rabbit IgG (H+L)-AF488 (db10005, shown in green). Nuclear DNA was labeled in blue with DAPI.

Control: Secondary antibody only.