

Recombinant

DGRmAb®

GDF15 (DGR20219) Rabbit mAb

db11261

Package : 10µL 20µL 50µL 100µL

Product Name : GDF15 (DGR20219) Rabbit mAb**Cat.No.:** db11261**Synonyms :** PDF; MIC1; PLAB; MIC-1; NAG-1; PTGFB; GDF-15**Application :** WB**Reactivity :** Human**Host species :** Rabbit**Background**

This gene encodes a secreted ligand of the TGF-beta (transforming growth factor-beta) superfamily of proteins. Ligands of this family bind various TGF-beta receptors leading to recruitment and activation of SMAD family transcription factors that regulate gene expression. The encoded preproprotein is proteolytically processed to generate each subunit of the disulfide-linked homodimer. The protein is expressed in a broad range of cell types, acts as a pleiotropic cytokine and is involved in the stress response program of cells after cellular injury. Increased protein levels are associated with disease states such as tissue hypoxia, inflammation, acute injury and oxidative stress. [provided by RefSeq, Aug 2016]

Immunogen

A synthetic peptide of human GDF15

Gene ID

9518

Swiss Prot

Q99988

Synonyms

PDF; MIC1; PLAB; MIC-1; NAG-1; PTGFB; GDF-15

Reactivity

Human

Application

WB

Recommended dilution

WB: 1:1000-1:5000

Calculated MW

34 kDa

Observed MW

34 kDa

Host species

Rabbit

Clonality

Monoclonal

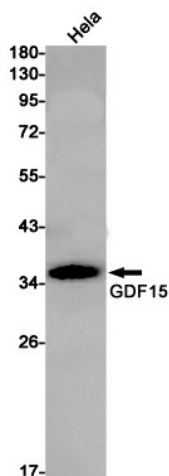
Clonality No.

DGR20219

Isotype

IgG

Purity	Affinity Purification
Conjugation	Un-conjugated
Storage Stability	Store at -20°C. Supplied in 50mM Tris-Glycine(pH 7.4), 0.15M NaCl, 40% Glycerol, 0.01% sodium azide and 0.05% BSA. Stable for 12 months from date of receipt.



Western blot detection of GDF15 in HeLa cell lysates using GDF15 antibody(1:1000 diluted).