

Recombinant

DGRmAb®

SF2 (DGR20365) Rabbit mAb

db11263

Package : 10µL 20µL 50µL 100µL

Product Name : SF2 (DGR20365) Rabbit mAb**Cat.No.:** db11263**Synonyms** : ASF; SF2; SFRS1; SF2p33; SRp30a**Application** : WB, IHC-P, ICC/IF, FC**Reactivity** : Human,Mouse,Rat**Host species** : Rabbit**Background**

This gene encodes a member of the arginine/serine-rich splicing factor protein family. The encoded protein can either activate or repress splicing, depending on its phosphorylation state and its interaction partners. Multiple transcript variants have been found for this gene. There is a pseudogene of this gene on chromosome 13. [provided by RefSeq, Jun 2014]

Immunogen

A synthetic peptide of human SF2

Gene ID

6426

Swiss Prot

Q07955

Synonyms

ASF; SF2; SFRS1; SF2p33; SRp30a

Reactivity

Human,Mouse,Rat

Application

WB, IHC-P, ICC/IF, FC

Recommended dilution

WB: 1:1000-1:5000

IHC-P: 1:200-1:1000

ICC/IF: 1:100-1:500

FC: 1:50-1:100

Calculated MW

28 kDa

Observed MW

28 kDa

Host species

Rabbit

Clonality

Monoclonal

Clonality No.

DGR20365

Isotype

IgG

Purity

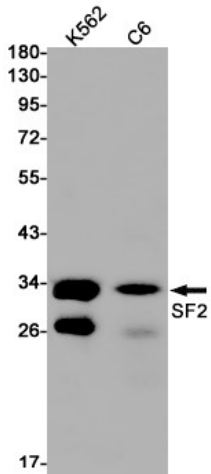
Affinity Purification

Conjugation

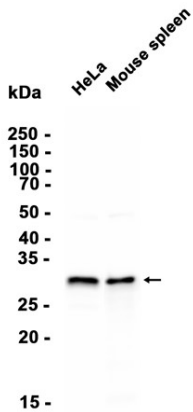
Un-conjugated

Storage Stability

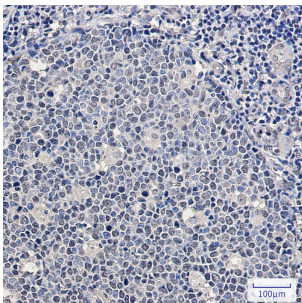
Store at -20°C. Supplied in 50mM Tris-Glycine(pH 7.4), 0.15M NaCl, 40% Glycerol, 0.01% sodium azide and 0.05% BSA. Stable for 12 months from date of receipt.



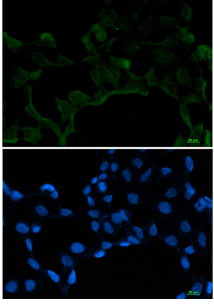
Western blot detection of SF2 in K562,C6 cell lysates using SF2 antibody(1:1000 diluted).



Western blot analysis of extracts from HeLa cells and Mouse spleen tissue using db11263 at 1:2000.



Immunohistochemical analysis of paraffin-embedded human tonsil using db11263 antibody.



Immunofluorescent analysis of 293T cells using db11263 antibody (green), and DAPI (blue).