

Recombinant

DGRmAb®

LAMP1 (DGR20924) Rabbit mAb

db11271

Package : 10µL 20µL 50µL 100µL

Product Name : LAMP1 (DGR20924) Rabbit mAb**Cat.No.:** db11271**Synonyms** : LAMPA; CD107a; LGP120**Application** : WB, IHC-P**Reactivity** : Human**Host species** : Rabbit**Background**

The protein encoded by this gene is a member of a family of membrane glycoproteins. This glycoprotein provides selectins with carbohydrate ligands. It may also play a role in tumor cell metastasis. [provided by RefSeq, Jul 2008]

Immunogen

A synthetic peptide of human LAMP1

Gene ID

3916

Swiss Prot

P11279

Synonyms

LAMPA; CD107a; LGP120

Reactivity

Human

Application

WB, IHC-P

Recommended dilution

WB: 1:1000-1:5000

IHC-P: 1:100-1:500

Calculated MW

45 kDa

Observed MW

90-120 kDa

Host species

Rabbit

Clonality

Monoclonal

Clonality No.

DGR20924

Isotype

IgG

Purity

Affinity Purification

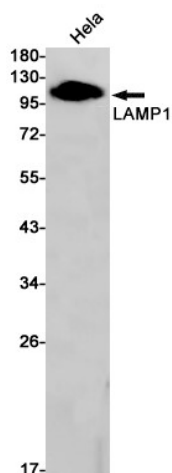
Conjugation

Un-conjugated

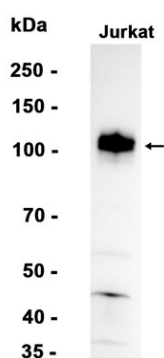
Storage Stability

Store at -20°C. Supplied in 50mM Tris-Glycine(pH 7.4), 0.15M NaCl, 40% Glycerol, 0.01% sodium

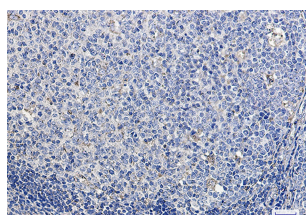
azide and 0.05% BSA. Stable for 12 months from date of receipt.



Western blot detection of LAMP1 in Hela cell lysates using LAMP1 antibody (1:1000 diluted).



Western blot analysis of extracts from Jurkat cells using db11271 at 1:4000.



Immunohistochemical analysis of paraffin-embedded human tonsil using db11271 antibody.