

Recombinant

DGRmAb®

Radixin (DGR21033) Rabbit mAb

db11280

Package : 10µL 20µL 50µL 100µL

Product Name : Radixin (DGR21033) Rabbit mAb**Cat.No.:** db11280**Synonyms** : DFNB24**Application** : WB, IHC-P, ICC/IF, FC**Reactivity** : Human,Mouse,Rat**Host species** : Rabbit**Background**

Radixin is a cytoskeletal protein that may be important in linking actin to the plasma membrane. It is highly similar in sequence to both ezrin and moesin. The radixin gene has been localized by fluorescence in situ hybridization to 11q23. A truncated version representing a pseudogene (RDXP2) was assigned to Xp21.3. Another pseudogene that seemed to lack introns (RDXP1) was mapped to 11p by Southern and PCR analyses. Multiple alternatively spliced transcript variants encoding different isoforms have been found for this gene. [provided by RefSeq, May 2012]

Immunogen

A synthetic peptide of human Radixin

Gene ID

5962

Swiss Prot

P35241

Synonyms

DFNB24

Reactivity

Human,Mouse,Rat

Application

WB, IHC-P, ICC/IF, FC

Recommended dilution

WB: 1:1000-1:5000

IHC-P: 1:100-1:200

ICC/IF: 1:20-1:50

FC: 1:100

Calculated MW

69 kDa

Observed MW

80 kDa

Host species

Rabbit

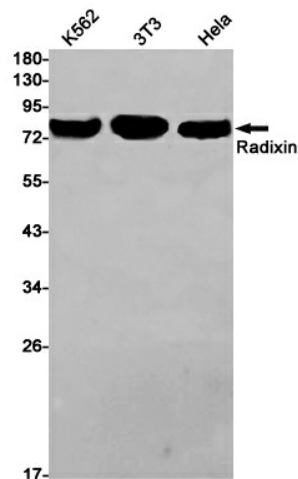
Clonality

Monoclonal

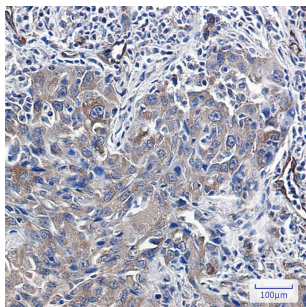
Clonality No.

DGR21033

| | |
|-------------------|---|
| Isotype | IgG |
| Purity | Affinity Purification |
| Conjugation | Un-conjugated |
| Storage Stability | Store at -20°C. Supplied in 50mM Tris-Glycine(pH 7.4), 0.15M NaCl, 40% Glycerol, 0.01% sodium azide and 0.05% BSA. Stable for 12 months from date of receipt. |



Western blot detection of Radixin in K562,3T3,HeLa cell lysates using Radixin antibody(1:1000 diluted).



Immunohistochemical analysis of paraffin-embedded human lung cancer using db11280 antibody.