

Recombinant

DGRmAb®

ATG7 (DGR21045) Rabbit mAb

db11414

Package : 10µL 20µL 50µL 100µL

Product Name : ATG7 (DGR21045) Rabbit mAb**Cat.No.:** db11414**Synonyms** : GSA7; APG7L; APG7-LIKE**Application** : WB, IHC-P, ICC/IF, FC, IP**Reactivity** : Human**Host species** : Rabbit**Background**

This gene encodes an E1-like activating enzyme that is essential for autophagy and cytoplasmic to vacuole transport. The encoded protein is also thought to modulate p53-dependent cell cycle pathways during prolonged metabolic stress. It has been associated with multiple functions, including axon membrane trafficking, axonal homeostasis, mitophagy, adipose differentiation, and hematopoietic stem cell maintenance. Alternative splicing results in multiple transcript variants. [provided by RefSeq, Sep 2015]

Immunogen

A synthetic peptide of human ATG7

Gene ID

10533

Swiss Prot

O95352

Synonyms

GSA7; APG7L; APG7-LIKE

Reactivity

Human

Application

WB, IHC-P, ICC/IF, FC, IP

Recommended dilution

WB: 1:5000-1:50000

IHC-P: 1:200-1:500

ICC/IF: 1:100-1:500

FC: 1:50-1:100

IP: 1:20-1:50

Calculated MW

78 kDa

Observed MW

78 kDa

Host species

Rabbit

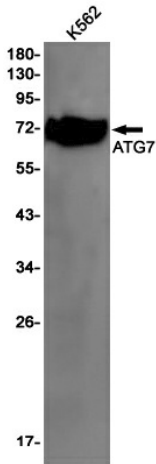
Clonality

Monoclonal

Clonality No.

DGR21045

Isotype	IgG
Purity	Affinity Purification
Conjugation	Un-conjugated
Storage Stability	Store at -20°C. Supplied in 50mM Tris-Glycine(pH 7.4), 0.15M NaCl, 40% Glycerol, 0.01% sodium azide and 0.05% BSA. Stable for 12 months from date of receipt.



Western blot detection of ATG7 in K562 cell lysates using ATG7 antibody(1:1000 diluted).