

Recombinant

DGRmAb®

CKII alpha (DGR31267) Rabbit mAb

db11421

Package : 10µL 20µL 50µL 100µL

Product Name : CKII alpha (DGR31267) Rabbit mAb**Cat.No.:** db11421**Synonyms** : CKII; Cka1; Cka2; CK2A1; OCNDS**Application** : WB, FC**Reactivity** : Human,Mouse,Rat**Host species** : Rabbit**Background**

Casein kinase II is a serine/threonine protein kinase that phosphorylates acidic proteins such as casein. It is involved in various cellular processes, including cell cycle control, apoptosis, and circadian rhythm. The kinase exists as a tetramer and is composed of an alpha, an alpha-prime, and two beta subunits. The alpha subunits contain the catalytic activity while the beta subunits undergo autophosphorylation. The protein encoded by this gene represents the alpha subunit. Multiple transcript variants encoding different protein isoforms have been found for this gene. [provided by RefSeq, Apr 2018]

Immunogen

A synthetic peptide of human CSNK2A1

Gene ID

1457

Swiss Prot

P68400

Synonyms

CKII; Cka1; Cka2; CK2A1; OCNDS

Reactivity

Human,Mouse,Rat

Application

WB, FC

Recommended dilutionWB: 1:1000
FC: 1:20-1:50**Calculated MW**

45 kDa

Observed MW

45 kDa

Host species

Rabbit

Clonality

Monoclonal

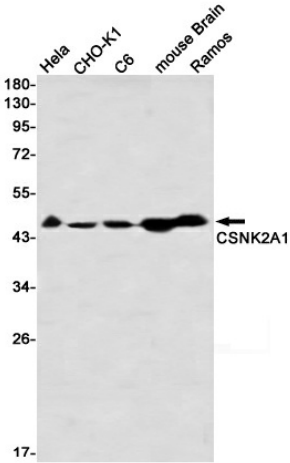
Clonality No.

DGR31267

Isotype

IgG

Purity	Affinity Purification
Conjugation	Un-conjugated
Storage Stability	Store at -20°C. Supplied in 50mM Tris-Glycine(pH 7.4), 0.15M NaCl, 40% Glycerol, 0.01% sodium azide and 0.05% BSA. Stable for 12 months from date of receipt.



Western blot detection of CSNK2A1 in HeLa,CHO-K1,C6,mouse Brain,Ramos using CSNK2A1 antibody(1:1000 diluted).