

Recombinant

DGRmAb®

**DDB1 (DGR31312) Rabbit mAb**

db11425

Package : 10µL 20µL 50µL 100µL

**Product Name** : DDB1 (DGR31312) Rabbit mAb**Cat.No.:** db11425**Synonyms** : XPE; DDBA; XAP1; XPCE; XPE-BF; UV-DDB1**Application** : WB, IHC-P, ICC/IF**Reactivity** : Human,Mouse,Rat**Host species** : Rabbit**Background**

The protein encoded by this gene is the large subunit (p127) of the heterodimeric DNA damage-binding (DDB) complex while another protein (p48) forms the small subunit. This protein complex functions in nucleotide-excision repair and binds to DNA following UV damage. Defective activity of this complex causes the repair defect in patients with xeroderma pigmentosum complementation group E (XPE) - an autosomal recessive disorder characterized by photosensitivity and early onset of carcinomas. However, it remains for mutation analysis to demonstrate whether the defect in XPE patients is in this gene or the gene encoding the small subunit. In addition, Best vitelliform macular dystrophy is mapped to the same region as this gene on 11q, but no sequence alternations of this gene are demonstrated in Best disease patients. The protein encoded by this gene also functions as an adaptor molecule for the cullin 4 (CUL4) ubiquitin E3 ligase complex by facilitating the binding of substrates to this complex and the ubiquitination of proteins. [provided by RefSeq, May 2012]

**Immunogen**

A synthetic peptide of human DDB1

**Gene ID**

1642

**Swiss Prot**

Q16531

**Synonyms**

XPE; DDBA; XAP1; XPCE; XPE-BF; UV-DDB1

**Reactivity**

Human,Mouse,Rat

**Application**

WB, IHC-P, ICC/IF

**Recommended dilution**

WB: 1:5000-1:50000

IHC-P: 1:100-1:200

ICC/IF: 1:100

**Calculated MW**

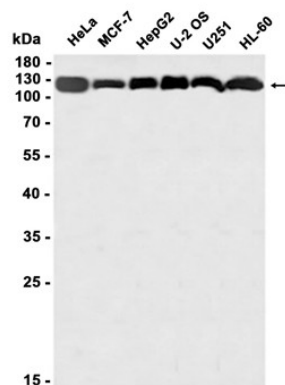
127 kDa

**Observed MW**

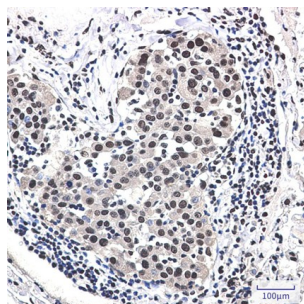
127 kDa

---

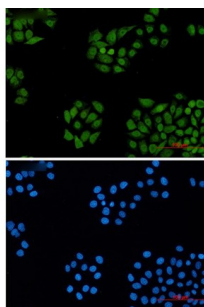
<b>Host species</b>	Rabbit
<b>Clonality</b>	Monoclonal
<b>Clonality No.</b>	DGR31312
<b>Isotype</b>	IgG
<b>Purity</b>	Affinity Purification
<b>Conjugation</b>	Un-conjugated
<b>Storage Stability</b>	Store at -20°C. Supplied in 50mM Tris-Glycine(pH 7.4), 0.15M NaCl, 40% Glycerol, 0.01% sodium azide and 0.05% BSA. Stable for 12 months from date of receipt.



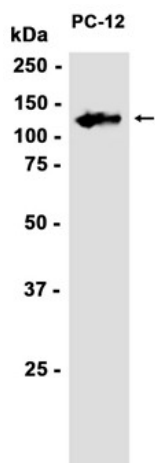
Western blot analysis of extracts from HeLa, MCF-7, HepG2, U-2 OS, U251, HL-60 cells using db11425 at 1:1000.



Immunohistochemical analysis of paraffin-embedded human lung cancer using db11425 antibody.



Immunofluorescent analysis of HeLa cells using db11425 antibody (green), and DAPI (blue).



Western blot analysis of extracts from PC-12 cells using db11425 at 1:1000.

