

Recombinant

DGRmAb®

**ATG3 (DGR32204) Rabbit mAb**

db11469

Package : 10µL 20µL 50µL 100µL

**Product Name** : ATG3 (DGR32204) Rabbit mAb**Cat.No.:** db11469**Synonyms** : APG3; APG3L; PC3-96; APG3-LIKE**Application** : WB, IHC-P, ICC/IF, FC**Reactivity** : Human,Mouse,Rat**Host species** : Rabbit**Background**

This gene encodes a ubiquitin-like-conjugating enzyme and is a component of ubiquitination-like systems involved in autophagy, the process of degradation, turnover and recycling of cytoplasmic constituents in eukaryotic cells. This protein is known to play a role in regulation of autophagy during cell death. A pseudogene of this gene is located on chromosome 20. Alternative splicing results in multiple transcript variants encoding different isoforms. [provided by RefSeq, Jul 2013]

**Immunogen**

A synthetic peptide of human ATG3

**Gene ID**

64422

**Swiss Prot**

Q9NT62

**Synonyms**

APG3; APG3L; PC3-96; APG3-LIKE

**Reactivity**

Human,Mouse,Rat

**Application**

WB, IHC-P, ICC/IF, FC

**Recommended dilution**

WB: 1:2000-1:20000

IHC-P: 1:100-1:200

ICC/IF: 1:100-1:200

FC: 1:200-1:2000

**Calculated MW**

36 kDa

**Observed MW**

40 kDa

**Host species**

Rabbit

**Clonality**

Monoclonal

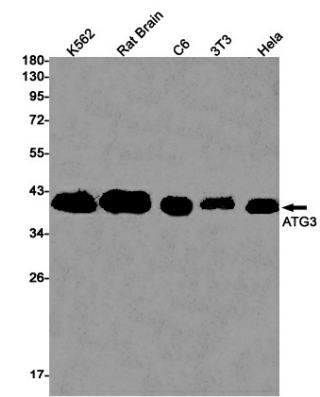
**Clonality No.**

DGR32204

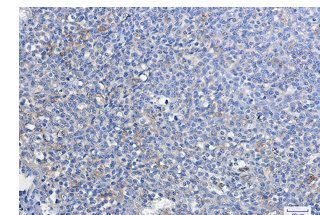
**Isotype**

IgG

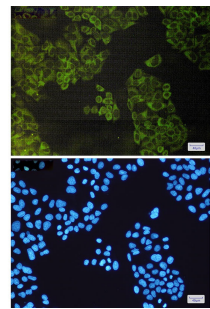
Purity	Affinity Purification
Conjugation	Un-conjugated
Storage Stability	Store at -20°C. Supplied in 50mM Tris-Glycine(pH 7.4), 0.15M NaCl, 40% Glycerol, 0.01% sodium azide and 0.05% BSA. Stable for 12 months from date of receipt.



Western blot detection of ATG3 in K562,Rat Brain,C6,3T3,Hela cell lysates using ATG3 antibody(1:1000 diluted).



Immunohistochemical analysis of paraffin-embedded human tonsil using db11469 antibody.



Immunofluorescent analysis of HeLa cells using db11469 antibody (green), and DAPI (blue).