

Recombinant

DGRmAb®

14-3-3 alpha/beta (DGR32331) Rabbit mAb

db11474

Package : 10µL 20µL 50µL 100µL

Product Name : 14-3-3 alpha/beta (DGR32331) Rabbit mAb**Cat.No.:** db11474**Synonyms** : HS1; GW128; YWHAA; KCIP-1; HEL-S-1**Application** : WB, IHC, ICC/IF**Reactivity** : Human, Mouse, Rat**Host species** : Rabbit**Background**

This gene encodes a protein belonging to the 14-3-3 family of proteins, members of which mediate signal transduction by binding to phosphoserine-containing proteins. This highly conserved protein family is found in both plants and mammals. The encoded protein has been shown to interact with RAF1 and CDC25 phosphatases, suggesting that it may play a role in linking mitogenic signaling and the cell cycle machinery. Two transcript variants, which encode the same protein, have been identified for this gene. [provided by RefSeq, Jul 2008]

Immunogen

A synthetic peptide of human 14-3-3 alpha/beta

Gene ID

7529

Swiss Prot

P31946

Synonyms

HS1; GW128; YWHAA; KCIP-1; HEL-S-1

Reactivity

Human, Mouse, Rat

Application

WB, IHC, ICC/IF

Recommended dilution

WB: 1:1000

IHC: 1:200-1:1000

ICC/IF 1:200

Calculated MW

28 kDa

Observed MW

28 kDa

Host species

Rabbit

Clonality

Monoclonal

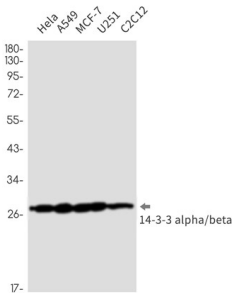
Clonality No.

DGR32331

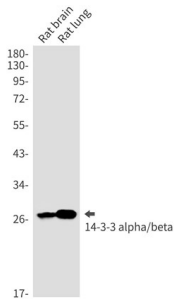
Isotype

IgG

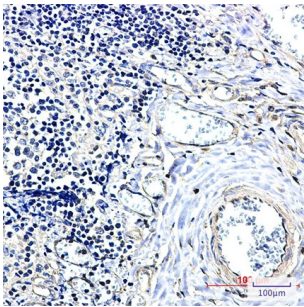
Purity	Affinity Purification
Conjugation	Un-conjugated
Storage Stability	Store at -20°C. Supplied in 50mM Tris-Glycine(pH 7.4), 0.15M NaCl, 40% Glycerol, 0.01% sodium azide and 0.05% BSA. Stable for 12 months from date of receipt.



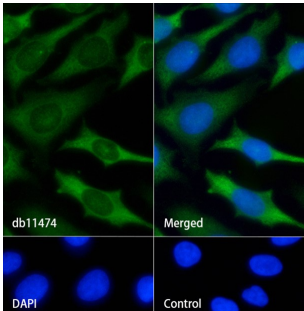
Western blot detection of 14-3-3 alpha/beta in HeLa,A549,MCF-7,U251,C2C12 cell lysates using 14-3-3 alpha/beta antibody(1:1000 diluted).



Western blot detection of 14-3-3 alpha/beta in Rat brain, Rat lung tissue lysates using NQO1 antibody(1:1000 diluted)



Immunohistochemical analysis of paraffin-embedded human tonsil using db11474 antibody.



Immunofluorescence analysis of HeLa cells labelling 14-3-3 alpha/beta with db11474.

The cells were fixed with cold 100% methanol (10min, 4℃) and blocked in 1% BSA/10% normal goat serum/0.3M glycine in 0.1% PBS-Tween 20 for 1h. The cells were then incubate with db11474 (1:200) at room temprature for 1h, followed by a further incubation at room temperature for 45min with Goat Anti Rabbit IgG (H+L)-AF488 (db10005, shown in green). Nuclear DNA was labeled in blue with DAPI.

Control: Secondary antibody only.