

Recombinant

DGRmAb®

SNAP25 (DGR32345) Rabbit mAb

db11478

Package : 10µL 20µL 50µL 100µL

Product Name : SNAP25 (DGR32345) Rabbit mAb**Cat.No.:** db11478**Synonyms** : SUP; RIC4; SEC9; SNAP; CMS18; RIC-4; SNAP-25; bA416N4.2; dJ1068F16.2**Application** : WB, ICC/IF, FC**Reactivity** : Human,Mouse,Rat**Host species** : Rabbit**Background**

Synaptic vesicle membrane docking and fusion is mediated by SNAREs (soluble N-ethylmaleimide-sensitive factor attachment protein receptors) located on the vesicle membrane (v-SNAREs) and the target membrane (t-SNAREs). The assembled v-SNARE/t-SNARE complex consists of a bundle of four helices, one of which is supplied by v-SNARE and the other three by t-SNARE. For t-SNAREs on the plasma membrane, the protein syntaxin supplies one helix and the protein encoded by this gene contributes the other two. Therefore, this gene product is a presynaptic plasma membrane protein involved in the regulation of neurotransmitter release. Two alternative transcript variants encoding different protein isoforms have been described for this gene. [provided by RefSeq, Jul 2008]

Immunogen

A synthetic peptide of human SNAP25

Gene ID

6616

Swiss Prot

P60880

Synonyms

SUP; RIC4; SEC9; SNAP; CMS18; RIC-4; SNAP-25; bA416N4.2; dJ1068F16.2

Reactivity

Human,Mouse,Rat

Application

WB, ICC/IF, FC

Recommended dilutionWB: 1:1000
ICC/IF: 1:100-1:200
FC: 1:100-1:200**Calculated MW**

23 kDa

Observed MW

25 kDa

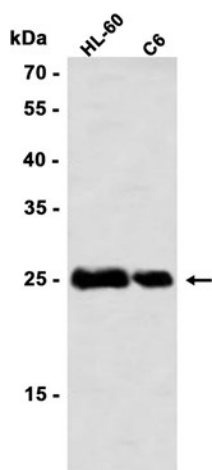
Host species

Rabbit

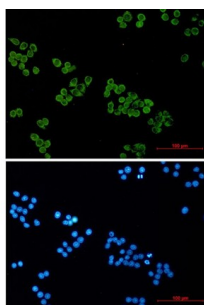
Clonality

Monoclonal

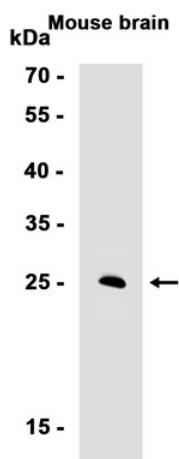
Clonality No.	DGR32345
Isotype	IgG
Purity	Affinity Purification
Conjugation	Un-conjugated
Storage Stability	Store at -20°C. Supplied in 50mM Tris-Glycine(pH 7.4), 0.15M NaCl, 40% Glycerol, 0.01% sodium azide and 0.05% BSA. Stable for 12 months from date of receipt.



Western blot analysis of extracts from HL-60, C6 cells using db11478 at 1:1000.



Immunofluorescent analysis of HeLa cells using db11478 antibody (green), and DAPI (blue).



Western blot analysis of extracts from Mouse brain tissue using db11478 at 1:1000.