

Recombinant

DGRmAb®

## c-Rel (DGR34046) Rabbit mAb

db11501

Package : 10µL 20µL 50µL 100µL

**Product Name** : c-Rel (DGR34046) Rabbit mAb**Cat.No.:** db11501**Synonyms** : C-Rel**Application** : WB, IP**Reactivity** : Human**Host species** : Rabbit**Background**

This gene encodes a protein that belongs to the Rel homology domain/immunoglobulin-like fold, plexin, transcription factor (RHD/IPT) family. Members of this family regulate genes involved in apoptosis, inflammation, the immune response, and oncogenic processes. This proto-oncogene plays a role in the survival and proliferation of B lymphocytes. Mutation or amplification of this gene is associated with B-cell lymphomas, including Hodgkin's lymphoma. Single nucleotide polymorphisms in this gene are associated with susceptibility to ulcerative colitis and rheumatoid arthritis. Alternative splicing results in multiple transcript variants encoding different isoforms. [provided by RefSeq, Apr 2014]

**Immunogen**

A synthetic peptide of human c-Rel

**Gene ID**

5966

**Swiss Prot**

Q04864

**Synonyms**

C-Rel

**Reactivity**

Human

**Application**

WB, IP

**Recommended dilution**WB: 1:1000  
IP: 1:10-1:100**Calculated MW**

69 kDa

**Observed MW**

78 kDa

**Host species**

Rabbit

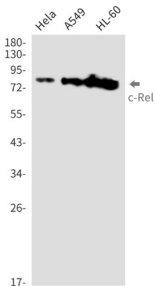
**Clonality**

Monoclonal

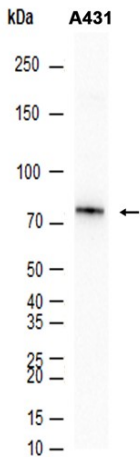
**Clonality No.**

DGR34046

Isotype	IgG
Purity	Affinity Purification
Conjugation	Un-conjugated
Storage Stability	Store at -20°C. Supplied in 50mM Tris-Glycine(pH 7.4), 0.15M NaCl, 40% Glycerol, 0.01% sodium azide and 0.05% BSA. Stable for 12 months from date of receipt.



Western blot detection of c-Rel in HeLa,A549,HL-60 cell lysates using c-Rel antibody(1:1000 diluted).



Western blot analysis of extracts from A431 cells using db11501 at 1:5000.