

Recombinant

DGRmAb®

MCM3 (DGR11254) Rabbit mAb

db11512

Package : 10µL 20µL 50µL 100µL

Product Name : MCM3 (DGR11254) Rabbit mAb**Cat.No.:** db11512**Synonyms :** HCC5; P1.h; RLFB; P1-MCM3**Application :** IHC-P**Reactivity :** Human**Host species :** Rabbit**Background**

The protein encoded by this gene is one of the highly conserved mini-chromosome maintenance proteins (MCM) that are involved in the initiation of eukaryotic genome replication. The hexameric protein complex formed by MCM proteins is a key component of the pre-replication complex (pre_RC) and may be involved in the formation of replication forks and in the recruitment of other DNA replication related proteins. This protein is a subunit of the protein complex that consists of MCM2-7. It has been shown to interact directly with MCM5/CDC46. This protein also interacts with and is acetylated by MCM3AP, a chromatin-associated acetyltransferase. The acetylation of this protein inhibits the initiation of DNA replication and cell cycle progression. Two transcript variants encoding different isoforms have been found for this gene. [provided by RefSeq, Jul 2012]

Immunogen

A synthetic peptide of human MCM3

Gene ID

4172

Swiss Prot

P25205

Synonyms

HCC5; P1.h; RLFB; P1-MCM3

Reactivity

Human

Application

IHC-P

Recommended dilution

IHC-P: 1:100-1:200

Calculated MW

91 kDa

Observed MW

100 kDa

Host species

Rabbit

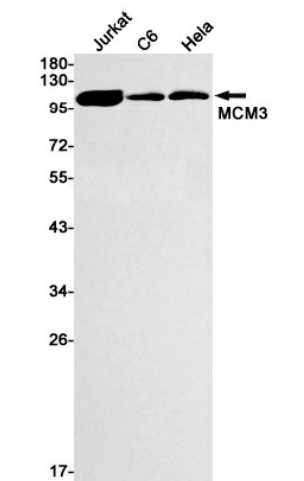
Clonality

Monoclonal

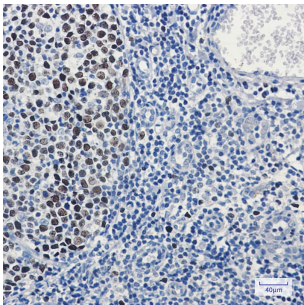
Clonality No.

DGR11254

Isotype	IgG
Purity	Affinity Purification
Conjugation	Un-conjugated
Storage Stability	Store at -20°C. Supplied in 50mM Tris-Glycine(pH 7.4), 0.15M NaCl, 40% Glycerol, 0.01% sodium azide and 0.05% BSA. Stable for 12 months from date of receipt.



Western blot detection of MCM3 in Jurkat,C6,HeLa cell lysates using MCM3 antibody(1:1000 diluted).



Immunohistochemical analysis of paraffin-embedded human tonsil using db11512 antibody.