

Recombinant

DGRmAb®

CaMKII (DGR14655) Rabbit mAb

db11726

Package : 10µL 20µL 50µL 100µL

Product Name : CaMKII (DGR14655) Rabbit mAb**Cat.No.:** db11726**Synonyms :** CAMKA**Application :** WB, IHC, ICC/IF, FC**Reactivity :** Human, Mouse, Rat**Host species :** Rabbit**Background**

The product of this gene belongs to the serine/threonine protein kinases family, and to the Ca(2+)/calmodulin-dependent protein kinases subfamily. Calcium signaling is crucial for several aspects of plasticity at glutamatergic synapses. This calcium calmodulin-dependent protein kinase is composed of four different chains: alpha, beta, gamma, and delta. The alpha chain encoded by this gene is required for hippocampal long-term potentiation (LTP) and spatial learning. In addition to its calcium-calmodulin (CaM)-dependent activity, this protein can undergo autophosphorylation, resulting in CaM-independent activity. Two transcript variants encoding distinct isoforms have been identified for this gene. [provided by RefSeq, Nov 2008]

Immunogen

A synthetic peptide of human CaMKII

Gene ID

815

Swiss Prot

Q9UQM7

Synonyms

CAMKA

Reactivity

Human, Mouse, Rat

Application

WB, IHC, ICC/IF, FC

Recommended dilution

WB: 1:1000-1:2000

IHC: 1:200-1:500

ICC/IF: 1:20-1:100

FC: 1:20-1:100

Calculated MW

54 kDa

Observed MW

54 kDa

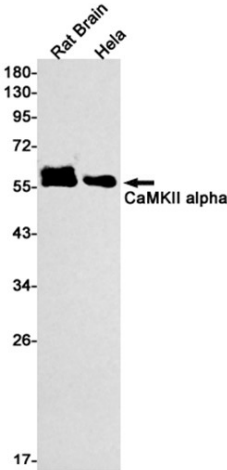
Host species

Rabbit

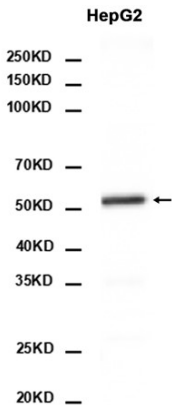
Clonality

Monoclonal

| | |
|-------------------|---|
| Clonality No. | DGR14655 |
| Isotype | IgG |
| Purity | Affinity Purification |
| Conjugation | Un-conjugated |
| Storage Stability | Store at -20°C. Supplied in 50mM Tris-Glycine(pH 7.4), 0.15M NaCl, 40% Glycerol, 0.01% sodium azide and 0.05% BSA. Stable for 12 months from date of receipt. |



Western blot detection of CaMKII alpha in Rat Brain, HeLa cell lysates using CaMKII alpha antibody (1:1000 diluted).



Western blot analysis of extracts from HepG2 cells using db11726 at 1:2000.