

Recombinant

DGRmAb®

RRM1 (DGR14730) Rabbit mAb

db11734

Package : 10µL 20µL 50µL 100µL

Product Name : RRM1 (DGR14730) Rabbit mAb**Cat.No.:** db11734**Synonyms** : R1; RR1; RIR1**Application** : WB, IHC-P, ICC/IF, FC**Reactivity** : Human,Mouse,Rat**Host species** : Rabbit**Background**

This gene encodes the large and catalytic subunit of ribonucleotide reductase, an enzyme essential for the conversion of ribonucleotides into deoxyribonucleotides. A pool of available deoxyribonucleotides is important for DNA replication during S phase of the cell cycle as well as multiple DNA repair processes. Alternative splicing results in multiple transcript variants. [provided by RefSeq, Dec 2015]

Immunogen

A synthetic peptide of human RRM1

Gene ID

6240

Swiss Prot

P23921

Synonyms

R1; RR1; RIR1

Reactivity

Human,Mouse,Rat

Application

WB, IHC-P, ICC/IF, FC

Recommended dilution

WB: 1:2000-1:20000

IHC-P: 1:200-1:1000

ICC/IF: 1:100-1:200

FC: 1:100

Calculated MW

90 kDa

Observed MW

90 kDa

Host species

Rabbit

Clonality

Monoclonal

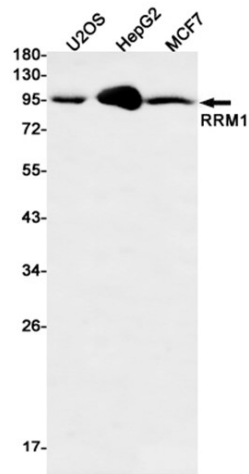
Clonality No.

DGR14730

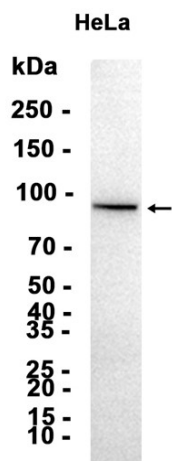
Isotype

IgG

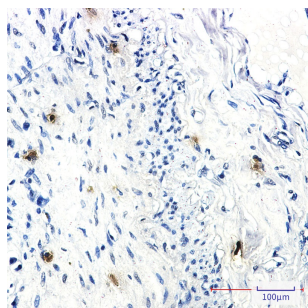
Purity	Affinity Purification
Conjugation	Un-conjugated
Storage Stability	Store at -20°C. Supplied in 50mM Tris-Glycine(pH 7.4), 0.15M NaCl, 40% Glycerol, 0.01% sodium azide and 0.05% BSA. Stable for 12 months from date of receipt.



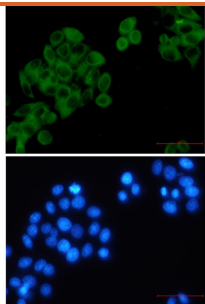
Western blot detection of RRM1 in U2OS,HepG2,MCF7 cell lysates using RRM1 antibody(1:500 diluted).



Western blot analysis of extracts from HeLa cells tissue using db11734 at 1:5000.



Immunohistochemical analysis of paraffin-embedded human lung cancer using db11734 antibody.



Immunofluorescent analysis of HeLa cells using db11734 antibody (green), and DAPI (blue).