

Recombinant

DGRmAb®

## DDAH1 (DGR14834) Rabbit mAb

db11744

Package : 10µL 20µL 50µL 100µL

**Product Name** : DDAH1 (DGR14834) Rabbit mAb

**Cat.No.:** db11744

**Synonyms** : DDAH; DDAHI; DDAH-1; HEL-S-16

**Application** : WB, IHC-P, ICC/IF, FC, IP

**Reactivity** : Human,Mouse,Rat

**Host species** : Rabbit

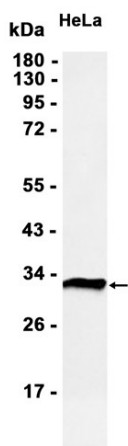
<b>Background</b>	This gene belongs to the dimethylarginine dimethylaminohydrolase (DDAH) gene family. The encoded enzyme plays a role in nitric oxide generation by regulating cellular concentrations of methylarginines, which in turn inhibit nitric oxide synthase activity. [provided by RefSeq, Jul 2008]
<b>Immunogen</b>	A synthetic peptide of human DDAH1
<b>Gene ID</b>	23576
<b>Swiss Prot</b>	O94760
<b>Synonyms</b>	DDAH; DDAHI; DDAH-1; HEL-S-16
<b>Reactivity</b>	Human,Mouse,Rat
<b>Application</b>	WB, IHC-P, ICC/IF, FC, IP
<b>Recommended dilution</b>	WB: 1:2000-1:20000 IHC-P: 1:50 ICC/IF: 1:100 FC: 1:20-1:50 IP: 1:20-1:50
<b>Calculated MW</b>	31 kDa
<b>Observed MW</b>	37 kDa
<b>Host species</b>	Rabbit
<b>Clonality</b>	Monoclonal
<b>Clonality No.</b>	DGR14834
<b>Isotype</b>	IgG
<b>Purity</b>	Affinity Purification

**Conjugation**

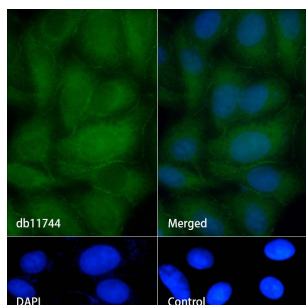
Un-conjugated

**Storage Stability**

Store at -20°C. Supplied in 50mM Tris-Glycine(pH 7.4), 0.15M NaCl, 40% Glycerol, 0.01% sodium azide and 0.05% BSA. Stable for 12 months from date of receipt.



Western blot analysis of extracts from HeLa cells using db11744 at 1:1000.



Immunofluorescence analysis of HepG2 cells labelling DDAH1 with db11744.

The cells were fixed with cold 100% methanol (10min, 4°C) and blocked in 1% BSA/10% normal goat serum/0.3M glycine in 0.1% PBS-Tween 20 for 1h. The cells were then incubate with db11744 (1:100) at room temprature for 1h, followed by a further incubation at room temperature for 45min with Goat Anti Rabbit IgG (H+L)-AF488 (db10005, shown in green). Nuclear DNA was labeled in blue with DAPI.

Control: Secondary antibody only.