

Recombinant

DGRmAb®

S100B (DGR14866) Rabbit mAb

db11749

Package : 10µL 20µL 50µL 100µL

Product Name : S100B (DGR14866) Rabbit mAb**Cat.No.:** db11749**Synonyms** : NEF; S100; S100-B; S100beta**Application** : WB, IHC-P, ICC/IF**Reactivity** : Human,Mouse,Rat**Host species** : Rabbit**Background**

The protein encoded by this gene is a member of the S100 family of proteins containing 2 EF-hand calcium-binding motifs. S100 proteins are localized in the cytoplasm and/or nucleus of a wide range of cells, and involved in the regulation of a number of cellular processes such as cell cycle progression and differentiation. S100 genes include at least 13 members which are located as a cluster on chromosome 1q21; however, this gene is located at 21q22.3. This protein may function in Neurite extension, proliferation of melanoma cells, stimulation of Ca²⁺ fluxes, inhibition of PKC-mediated phosphorylation, astrocytosis and axonal proliferation, and inhibition of microtubule assembly. Chromosomal rearrangements and altered expression of this gene have been implicated in several neurological, neoplastic, and other types of diseases, including Alzheimer's disease, Down's syndrome, epilepsy, amyotrophic lateral sclerosis, melanoma, and type I diabetes. [provided by RefSeq, Jul 2008]

Immunogen

A synthetic peptide of human S100B

Gene ID

6285

Swiss Prot

P04271

Synonyms

NEF; S100; S100-B; S100beta

Reactivity

Human,Mouse,Rat

Application

WB, IHC-P, ICC/IF

Recommended dilution

WB: 1:1000-1:5000

IHC-P: 1:200-1:1000

ICC/IF: 1:100

Calculated MW

11 kDa

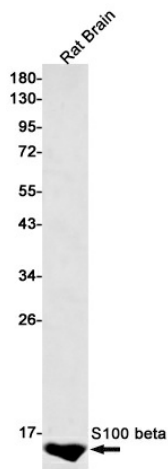
Observed MW

11 kDa

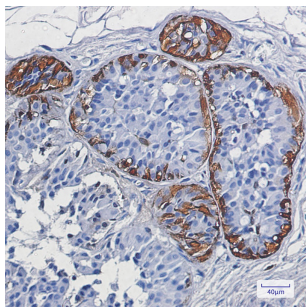
Host species

Rabbit

Clonality	Monoclonal
Clonality No.	DGR14866
Isotype	IgG
Purity	Affinity Purification
Conjugation	Un-conjugated
Storage Stability	Store at -20°C. Supplied in 50mM Tris-Glycine(pH 7.4), 0.15M NaCl, 40% Glycerol, 0.01% sodium azide and 0.05% BSA. Stable for 12 months from date of receipt.



Western blot detection of S100 beta in Rat Brain lysates using S100 beta antibody(1:500 diluted).



Immunohistochemical analysis of paraffin-embedded human breast cancer using db11749 antibody.