

Recombinant

DGRmAb®

ALDH1L1 (DGR15185) Rabbit mAb

db11799

Package : 10µL 20µL 50µL 100µL

Product Name : ALDH1L1 (DGR15185) Rabbit mAb**Cat.No.:** db11799**Synonyms** : FDH; FTHFD; 10-fTHF; 10-FTHFDH**Application** : WB, IHC-P**Reactivity** : Human,Mouse,Rat**Host species** : Rabbit**Background**

The protein encoded by this gene catalyzes the conversion of 10-formyltetrahydrofolate, nicotinamide adenine dinucleotide phosphate (NADP+), and water to tetrahydrofolate, NADPH, and carbon dioxide. The encoded protein belongs to the aldehyde dehydrogenase family. Loss of function or expression of this gene is associated with decreased apoptosis, increased cell motility, and cancer progression. There is an antisense transcript that overlaps on the opposite strand with this gene locus. Alternative splicing results in multiple transcript variants. [provided by RefSeq, Jun 2012]

Immunogen

A synthetic peptide of human ALDH1L1

Gene ID

10840

Swiss Prot

O75891

Synonyms

FDH; FTHFD; 10-fTHF; 10-FTHFDH

Reactivity

Human,Mouse,Rat

Application

WB, IHC-P

Recommended dilution

WB: 1:1000-1:5000

IHC-P: 1:50-1:100

Calculated MW

99 kDa

Observed MW

99 kDa

Host species

Rabbit

Clonality

Monoclonal

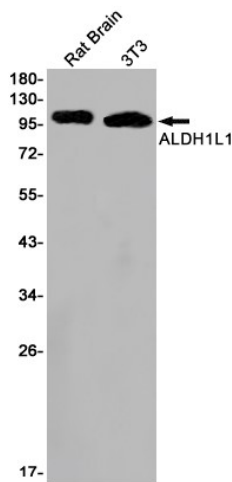
Clonality No.

DGR15185

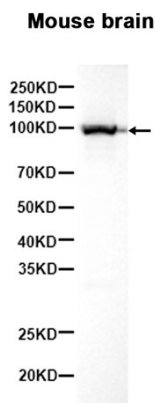
Isotype

IgG

Purity	Affinity Purification
Conjugation	Un-conjugated
Storage Stability	Store at -20°C. Supplied in 50mM Tris-Glycine(pH 7.4), 0.15M NaCl, 40% Glycerol, 0.01% sodium azide and 0.05% BSA. Stable for 12 months from date of receipt.



Western blot detection of ALDH1L1 in Rat Brain, 3T3 cell lysates using ALDH1L1 antibody (1:1000 diluted).



Western blot analysis of extracts from Mouse brain tissue using db11799 at 1:4000.