

Recombinant

DGRmAb®

Synaptophysin (DGR15438) Rabbit mAb

db11816

Package : 10µL 20µL 50µL 100µL

Product Name : Synaptophysin (DGR15438) Rabbit mAb**Cat.No.:** db11816**Synonyms** : MRX96; MRXSYN**Application** : WB, IHC, ICC/IF**Reactivity** : Human, Mouse, Rat**Host species** : Rabbit**Background**

This gene encodes an integral membrane protein of small synaptic vesicles in brain and endocrine cells. The protein also binds cholesterol and is thought to direct targeting of vesicle-associated membrane protein 2 (synaptobrevin) to intracellular compartments. Mutations in this gene are associated with an X-linked form of cognitive disability. [provided by RefSeq, Jul 2017]

Immunogen

A synthetic peptide of human Synaptophysin

Gene ID

6855

Swiss Prot

P08247

Synonyms

MRX96; MRXSYN

Reactivity

Human, Mouse, Rat

Application

WB, IHC, ICC/IF

Recommended dilution

WB: 1:2000-1:10000

IHC: 1:20

ICC/IF: 1:20

Calculated MW

34 kDa

Observed MW

38 kDa

Host species

Rabbit

Clonality

Monoclonal

Clonality No.

DGR15438

Isotype

IgG

Purity

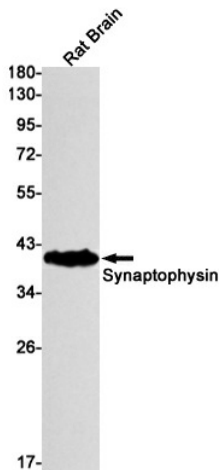
Affinity Purification

Conjugation

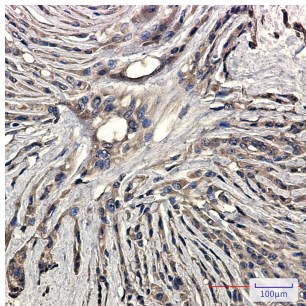
Un-conjugated

Storage Stability

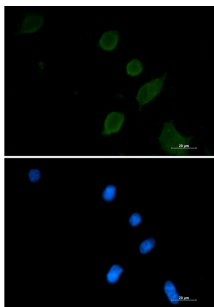
Store at -20°C. Supplied in 50mM Tris-Glycine(pH 7.4), 0.15M NaCl, 40% Glycerol, 0.01% sodium azide and 0.05% BSA. Stable for 12 months from date of receipt.



Western blot detection of Synaptophysin in Rat Brain lysates using Synaptophysin antibody(1:1000 diluted).



Immunohistochemical analysis of paraffin-embedded human Brain using db11816 antibody.



Immunofluorescent analysis of 3T3 cells using db11816 antibody (green), and DAPI (blue).