

Recombinant

DGRmAb®

Cyclophilin F (DGR15454) Rabbit mAb

db11820

Package : 10µL 20µL 50µL 100µL

Product Name : Cyclophilin F (DGR15454) Rabbit mAb**Cat.No.:** db11820**Synonyms** : CYP3; CypD; CyP-M; Cyp-D**Application** : WB, IHC-P, ICC/IF, FC**Reactivity** : Human,Mouse,Rat**Host species** : Rabbit**Background**

The protein encoded by this gene is a member of the peptidyl-prolyl cis-trans isomerase (PPIase) family. PPIases catalyze the cis-trans isomerization of proline imidic peptide bonds in oligopeptides and accelerate the folding of proteins. This protein is part of the mitochondrial permeability transition pore in the inner mitochondrial membrane. Activation of this pore is thought to be involved in the induction of apoptotic and necrotic cell death. [provided by RefSeq, Jul 2008]

Immunogen

A synthetic peptide of human Cyclophilin F

Gene ID

10105

Swiss Prot

P30405

Synonyms

CYP3; CypD; CyP-M; Cyp-D

Reactivity

Human,Mouse,Rat

Application

WB, IHC-P, ICC/IF, FC

Recommended dilution

WB: 1:1000
IHC-P: 1:500-1:5000
ICC/IF: 1:100
FC: 1:200-1:500

Calculated MW

22 kDa

Observed MW

18 kDa

Host species

Rabbit

Clonality

Monoclonal

Clonality No.

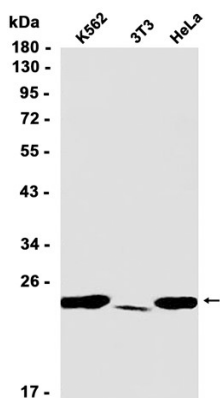
DGR15454

Isotype

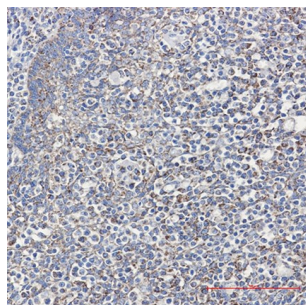
IgG

Purity	Affinity Purification
Conjugation	Un-conjugated
Storage Stability	Store at -20°C. Supplied in 50mM Tris-Glycine(pH 7.4), 0.15M NaCl, 40% Glycerol, 0.01% sodium azide and 0.05% BSA. Stable for 12 months from date of receipt.

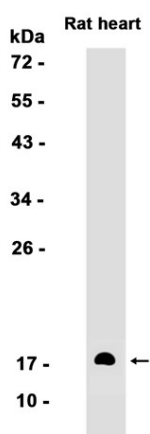
Western blot analysis of extracts from K562, 3T3, HeLa cells using db11820 at 1:1000.

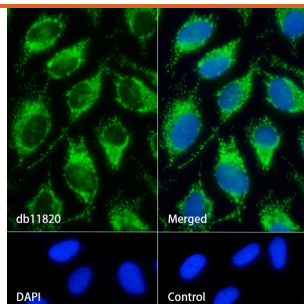


Immunohistochemical analysis of paraffin-embedded human tonsil using db11820 antibody.



Western blot analysis of extracts from Rat heart tissue using db11820 at 1:1000.





Immunofluorescence analysis of HeLa cells labelling Cyclophilin F with db11820.

The cells were fixed with 4% PFA (10min, RT) followed by treatment with 0.1% Triton X-100 (10min, RT), and blocked in 1% BSA/10% normal goat serum/0.3M glycine in 0.1% PBS-Tween 20 for 1h. The cells were then incubate with db11820 (1:100) at room temperature for 1h, followed by a further incubation at room temperature for 45min with Goat Anti Rabbit IgG (H+L)-AF488 (db10005, shown in green). Nuclear DNA was labeled in blue with DAPI.

Control: Secondary antibody only.