

Recombinant

DGRmAb®

**Phospho-Glutamate Receptor 1 (AMPA Subtype) (Ser845) (DGR16107) Rabbit mAb**

db11874

Package : 10µL 20µL 50µL 100µL

**Product Name** : Phospho-Glutamate Receptor 1 (AMPA Subtype) (Ser845) (DGR16107) Rabbit mAb**Cat.No.:** db11874**Synonyms** : GLUH1; GLUR1; GLURA; GluA1; HBGR1**Application** : WB**Reactivity** : Human,Mouse,Rat**Host species** : Rabbit**Background**

Glutamate receptors are the predominant excitatory neurotransmitter receptors in the mammalian brain and are activated in a variety of normal neurophysiologic processes. These receptors are heteromeric protein complexes with multiple subunits, each possessing transmembrane regions, and all arranged to form a ligand-gated ion channel. The classification of glutamate receptors is based on their activation by different pharmacologic agonists. This gene belongs to a family of alpha-amino-3-hydroxy-5-methyl-4-isoxazole propionate (AMPA) receptors. Alternatively spliced transcript variants encoding different isoforms have been found for this gene. [provided by RefSeq, Jul 2008]

**Immunogen**

A synthetic phosphopeptide corresponding to residues surrounding Ser845 of human AMPA Receptor 1 (GluA1)

**Gene ID**

2890

**Swiss Prot**

P42261

**Synonyms**

GLUH1; GLUR1; GLURA; GluA1; HBGR1

**Reactivity**

Human,Mouse,Rat

**Application**

WB

**Recommended dilution**

WB: 1:1000

**Calculated MW**

102 kDa

**Observed MW**

102 kDa

**Host species**

Rabbit

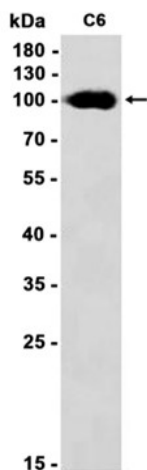
**Clonality**

Monoclonal

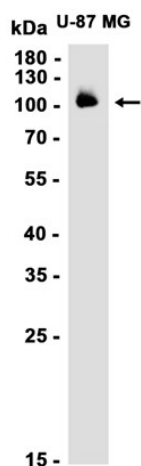
**Clonality No.**

DGR16107

<b>Isotype</b>	IgG
<b>Purity</b>	Affinity Purification
<b>Conjugation</b>	Un-conjugated
<b>Storage Stability</b>	Store at -20°C. Supplied in 50mM Tris-Glycine(pH 7.4), 0.15M NaCl, 40% Glycerol, 0.01% sodium azide and 0.05% BSA. Stable for 12 months from date of receipt.



Western blot analysis of extracts from C6 cells using db11874 at 1:1000.



Western blot analysis of extracts from U-87 MG cells using db11874 at 1:1000.