

Recombinant

DGRmAb®

MKLP1 (DGR16580) Rabbit mAb

db11886

Package : 10µL 20µL 50µL 100µL

Product Name : MKLP1 (DGR16580) Rabbit mAb**Cat.No.:** db11886**Synonyms :** CHO1; KNSL5; MKLP1; MKLP-1**Application :** WB, ICC/IF**Reactivity :** Human,Mouse,Rat**Host species :** Rabbit**Background**

The protein encoded by this gene is a member of kinesin-like protein family. This family includes microtubule-dependent molecular motors that transport organelles within cells and move chromosomes during cell division. This protein has been shown to cross-bridge antiparallel microtubules and drive microtubule movement in vitro. Alternate splicing of this gene results in multiple transcript variants. [provided by RefSeq, Jul 2013]

Immunogen

A synthetic peptide of human MKLP1

Gene ID

9493

Swiss Prot

Q02241

Synonyms

CHO1; KNSL5; MKLP1; MKLP-1

Reactivity

Human,Mouse,Rat

Application

WB, ICC/IF

Recommended dilution

WB: 1:1000

ICC/IF: 1:200-1:500

Calculated MW

110 kDa

Observed MW

110 kDa

Host species

Rabbit

Clonality

Monoclonal

Clonality No.

DGR16580

Isotype

IgG

Purity

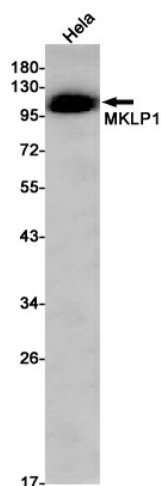
Affinity Purification

Conjugation

Un-conjugated

Storage Stability

Store at -20°C. Supplied in 50mM Tris-Glycine(pH 7.4), 0.15M NaCl, 40% Glycerol, 0.01% sodium azide and 0.05% BSA. Stable for 12 months from date of receipt.



Western blot detection of MKLP1 in HeLa cell lysates using MKLP1 antibody(1:1000 diluted).