

Recombinant

DGRmAb®

## ATG7 (DGR11419) Rabbit mAb

db11900

Package : 10µL 20µL 50µL 100µL

**Product Name** : ATG7 (DGR11419) Rabbit mAb**Cat.No.:** db11900**Synonyms** : GSA7; APG7L; APG7-LIKE**Application** : WB, ICC/IF**Reactivity** : Human,Mouse,Rat**Host species** : Rabbit**Background**

This gene encodes an E1-like activating enzyme that is essential for autophagy and cytoplasmic to vacuole transport. The encoded protein is also thought to modulate p53-dependent cell cycle pathways during prolonged metabolic stress. It has been associated with multiple functions, including axon membrane trafficking, axonal homeostasis, mitophagy, adipose differentiation, and hematopoietic stem cell maintenance. Alternative splicing results in multiple transcript variants. [provided by RefSeq, Sep 2015]

**Immunogen**

A synthetic peptide of human Apg7

**Gene ID**

10533

**Swiss Prot**

O95352

**Synonyms**

GSA7; APG7L; APG7-LIKE

**Reactivity**

Human,Mouse,Rat

**Application**

WB, ICC/IF

**Recommended dilution**

WB: 1:2000-1:20000

ICC/IF: 1:100-1:500

**Calculated MW**

78 kDa

**Observed MW**

78 kDa

**Host species**

Rabbit

**Clonality**

Monoclonal

**Clonality No.**

DGR11419

**Isotype**

IgG

**Purity**

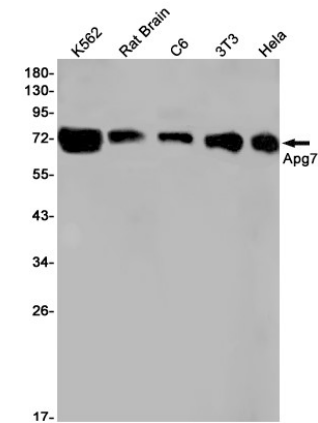
Affinity Purification

Conjugation

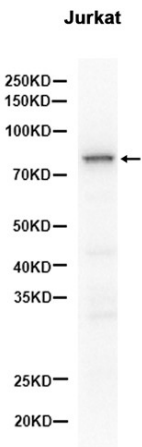
Un-conjugated

Storage Stability

Store at -20°C. Supplied in 50mM Tris-Glycine(pH 7.4), 0.15M NaCl, 40% Glycerol, 0.01% sodium azide and 0.05% BSA. Stable for 12 months from date of receipt.



Western blot detection of Apg7 in K562,Rat Brain,C6,3T3,HeLa cell lysates using Apg7 antibody(1:1000 diluted).



Western blot analysis of extracts from A431 cells and Rat kidney tissue using db11900 at 1:10000.