

Recombinant

DGRmAb®

## 14-3-3 (DGR13148) Rabbit mAb

db11907

Package : 10µL 20µL 50µL 100µL

**Product Name** : 14-3-3 (DGR13148) Rabbit mAb**Cat.No.:** db11907**Synonyms** : HS1; GW128; YWHAA; KCIP-1; HEL-S-1**Application** : WB**Reactivity** : Human,Mouse,Rat**Host species** : Rabbit**Background**

This gene encodes a protein belonging to the 14-3-3 family of proteins, members of which mediate signal transduction by binding to phosphoserine-containing proteins. This highly conserved protein family is found in both plants and mammals. The encoded protein has been shown to interact with RAF1 and CDC25 phosphatases, suggesting that it may play a role in linking mitogenic signaling and the cell cycle machinery. Two transcript variants, which encode the same protein, have been identified for this gene. [provided by RefSeq, Jul 2008]

**Immunogen**

A synthetic peptide of human 14-3-3

**Gene ID**

7529

**Swiss Prot**

P31946

**Synonyms**

HS1; GW128; YWHAA; KCIP-1; HEL-S-1

**Reactivity**

Human,Mouse,Rat

**Application**

WB

**Recommended dilution**

WB: 1:5000-1:50000

**Calculated MW**

28 kDa

**Observed MW**

28 kDa

**Host species**

Rabbit

**Clonality**

Monoclonal

**Clonality No.**

DGR13148

**Isotype**

IgG

**Purity**

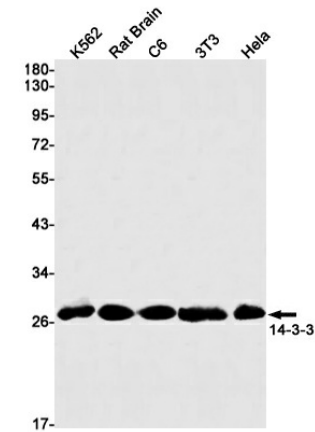
Affinity Purification

Conjugation

Un-conjugated

Storage Stability

Store at -20°C. Supplied in 50mM Tris-Glycine(pH 7.4), 0.15M NaCl, 40% Glycerol, 0.01% sodium azide and 0.05% BSA. Stable for 12 months from date of receipt.



Western blot detection of 41701 in K562,Rat Brain,C6,3T3,Hela cell lysates using 14-3-3 antibody(1:1000 diluted).