

Recombinant

DGRmAb®

## ERK2 (DGR13303) Rabbit mAb

db11918

Package : 10µL 20µL 50µL 100µL

**Product Name** : ERK2 (DGR13303) Rabbit mAb**Cat.No.:** db11918**Synonyms** : ERK; p38; p40; p41; ERK2; ERT1; ERK-2; MAPK2; PRKM1; PRKM2; P42MAPK; p41mapk; p42-MAPK**Application** : WB, IHC, ICC/IF, FC**Reactivity** : Human, Mouse, Rat**Host species** : Rabbit**Background**

This gene encodes a member of the MAP kinase family. MAP kinases, also known as extracellular signal-regulated kinases (ERKs), act as an integration point for multiple biochemical signals, and are involved in a wide variety of cellular processes such as proliferation, differentiation, transcription regulation and development. The activation of this kinase requires its phosphorylation by upstream kinases. Upon activation, this kinase translocates to the nucleus of the stimulated cells, where it phosphorylates nuclear targets. One study also suggests that this protein acts as a transcriptional repressor independent of its kinase activity. The encoded protein has been identified as a moonlighting protein based on its ability to perform mechanistically distinct functions. Two alternatively spliced transcript variants encoding the same protein, but differing in the UTRs, have been reported for this gene. [provided by RefSeq, Jan 2014]

**Immunogen**

A synthetic peptide of human ERK2

**Gene ID**

5594

**Swiss Prot**

P28482

**Synonyms**

ERK; p38; p40; p41; ERK2; ERT1; ERK-2; MAPK2; PRKM1; PRKM2; P42MAPK; p41mapk; p42-MAPK

**Reactivity**

Human, Mouse, Rat

**Application**

WB, IHC, ICC/IF, FC

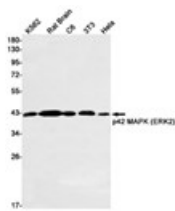
**Recommended dilution**WB: 1:1000  
IHC: 1:100  
ICC/IF: 1:200-1:2000  
FC: 1:200-1:1000**Calculated MW**

41 kDa

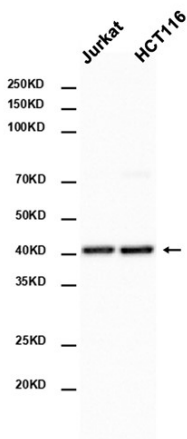
**Observed MW**

41 kDa

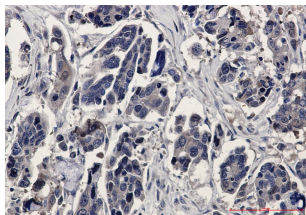
Host species	Rabbit
Clonality	Monoclonal
Clonality No.	DGR13303
Isotype	IgG
Purity	Affinity Purification
Conjugation	Un-conjugated
Storage Stability	Store at -20°C. Supplied in 50mM Tris-Glycine(pH 7.4), 0.15M NaCl, 40% Glycerol, 0.01% sodium azide and 0.05% BSA. Stable for 12 months from date of receipt.



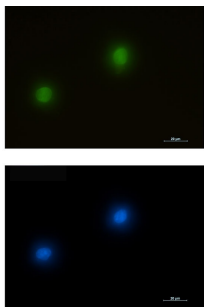
Western blot detection of p42 MAPK (ERK2) in K562,Rat Brain,C6,3T3,Hela cell lysates using p42 MAPK (ERK2) antibody(1:1000 diluted).



Western blot analysis of extracts from Jurkat,HCT116 cells using db11918 at 1:1000.



Immunohistochemical analysis of paraffin-embedded human Cholangiocarcinoma using db11918 antibody.



Immunofluorescent analysis of K562 cells using db11918 antibody (green), and DAPI (blue).