

Recombinant

DGRmAb®

Bcl-2 (DGR13485) Rabbit mAb

db11929

Package : 10µL 20µL 50µL 100µL

Product Name : Bcl-2 (DGR13485) Rabbit mAb**Cat.No.:** db11929**Synonyms** : Bcl-2; PPP1R50**Application** : WB, IHC-P, FC**Reactivity** : Human,Mouse,Rat**Host species** : Rabbit**Background**

This gene encodes an integral outer mitochondrial membrane protein that blocks the apoptotic death of some cells such as lymphocytes. Constitutive expression of BCL2, such as in the case of translocation of BCL2 to Ig heavy chain locus, is thought to be the cause of follicular lymphoma. Alternative splicing results in multiple transcript variants. [provided by RefSeq, Feb 2016]

Immunogen

Recombinant protein of human Bcl-2

Gene ID

596

Swiss Prot

P10415

Synonyms

Bcl-2; PPP1R50

Reactivity

Human,Mouse,Rat

Application

WB, IHC-P, FC

Recommended dilution

WB: 1:1000

IHC-P: 1:200-1:500

FC: 1:100-1:200

Calculated MW

26 kDa

Observed MW

26 kDa

Host species

Rabbit

Clonality

Monoclonal

Clonality No.

DGR13485

Isotype

IgG

Purity

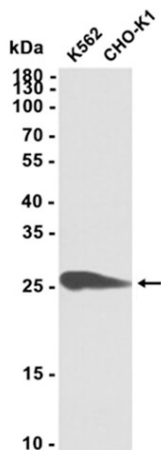
Affinity Purification

Conjugation

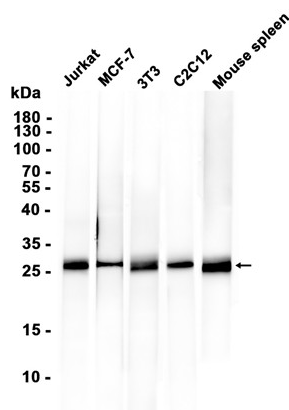
Un-conjugated

Storage Stability

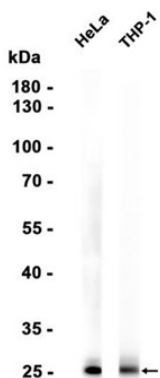
Store at -20°C. Supplied in 50mM Tris-Glycine(pH 7.4), 0.15M NaCl, 40% Glycerol, 0.01% sodium azide and 0.05% BSA. Stable for 12 months from date of receipt.



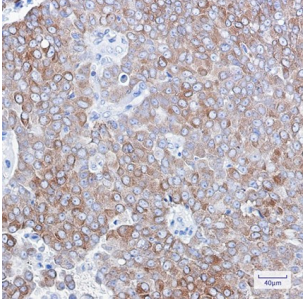
Western blot analysis of extracts from K562, CHO-K1 cells using db11929 at 1:1000.



Western blot analysis of extracts from Jurkat, MCF-7, 3T3, C2C12 cells and Mouse spleen tissue using db11929 at 1:1000.



Western blot analysis of extracts from HeLa, THP-1 cells using db11929 at 1:1000.



Immunohistochemical analysis of paraffin-embedded human breast cancer using db11929 antibody.