

Recombinant

DGRmAb®

Cyclophilin B (DGR13502) Rabbit mAb

db11930

Package : 10µL 20µL 50µL 100µL

Product Name : Cyclophilin B (DGR13502) Rabbit mAb**Cat.No.:** db11930**Synonyms** : OI9; CYPB; SCYLP; CYP-S1; HEL-S-39**Application** : WB**Reactivity** : Human,Mouse,Rat**Host species** : Rabbit**Background**

The protein encoded by this gene is a cyclosporine-binding protein and is mainly located within the endoplasmic reticulum. It is associated with the secretory pathway and released in biological fluids. This protein can bind to cells derived from T- and B-lymphocytes, and may regulate cyclosporine A-mediated immunosuppression. Variants have been identified in this protein that give rise to recessive forms of osteogenesis imperfecta. [provided by RefSeq, Oct 2009]

Immunogen

A synthetic peptide of human Cyclophilin B

Gene ID

5479

Swiss Prot

P23284

Synonyms

OI9; CYPB; SCYLP; CYP-S1; HEL-S-39

Reactivity

Human,Mouse,Rat

Application

WB

Recommended dilution

WB: 1:1000-1:5000

Calculated MW

24 kDa

Observed MW

20 kDa

Host species

Rabbit

Clonality

Monoclonal

Clonality No.

DGR13502

Isotype

IgG

Purity

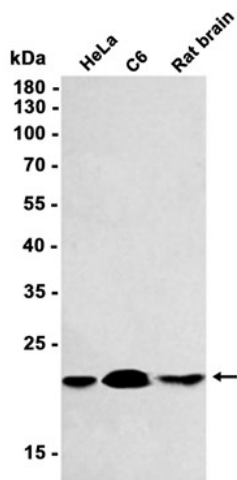
Affinity Purification

Conjugation

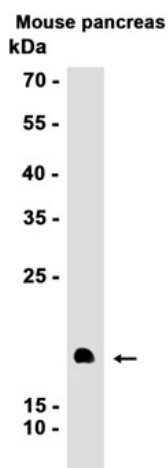
Un-conjugated

Storage Stability

Store at -20°C. Supplied in 50mM Tris-Glycine(pH 7.4), 0.15M NaCl, 40% Glycerol, 0.01% sodium azide and 0.05% BSA. Stable for 12 months from date of receipt.



Western blot analysis of extracts from HeLa, C6 cells and Rat brain tissue using db11930 at 1:500.



Western blot analysis of extracts from Mouse pancreas tissue using db11930 at 1:1000.