

Recombinant

DGRmAb®

HDAC1 (DGR13518) Rabbit mAb

db11944

Package : 10µL 20µL 50µL 100µL

Product Name : HDAC1 (DGR13518) Rabbit mAb**Cat.No.:** db11944**Synonyms** : HD1; RPD3; GON-10; RPD3L1**Application** : WB, IHC-P, ICC/IF, FC, IP**Reactivity** : Human,Mouse,Rat**Host species** : Rabbit**Background**

Histone acetylation and deacetylation, catalyzed by multisubunit complexes, play a key role in the regulation of eukaryotic gene expression. The protein encoded by this gene belongs to the histone deacetylase/acuc/apha family and is a component of the histone deacetylase complex. It also interacts with retinoblastoma tumor-suppressor protein and this complex is a key element in the control of cell proliferation and differentiation. Together with metastasis-associated protein-2, it deacetylates p53 and modulates its effect on cell growth and apoptosis. [provided by RefSeq, Jul 2008]

Immunogen

A synthetic peptide of human HDAC1

Gene ID

3065

Swiss Prot

Q13547

Synonyms

HD1; RPD3; GON-10; RPD3L1

Reactivity

Human,Mouse,Rat

Application

WB, IHC-P, ICC/IF, FC, IP

Recommended dilution

WB: 1:1000-1:5000

IHC-P: 1:50-1:100

ICC/IF: 1:50

FC: 1:20-1:50

IP: 1:20-1:50

Calculated MW

55 kDa

Observed MW

62 kDa

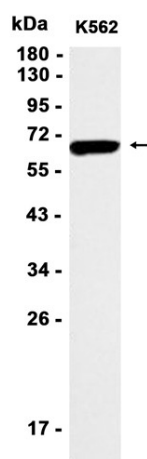
Host species

Rabbit

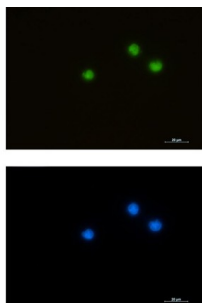
Clonality

Monoclonal

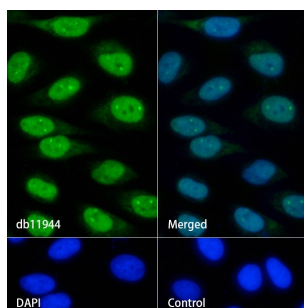
| | |
|--------------------------|---|
| Clonality No. | DGR13518 |
| Isotype | IgG |
| Purity | Affinity Purification |
| Conjugation | Un-conjugated |
| Storage Stability | Store at -20°C. Supplied in 50mM Tris-Glycine(pH 7.4), 0.15M NaCl, 40% Glycerol, 0.01% sodium azide and 0.05% BSA. Stable for 12 months from date of receipt. |



Western blot analysis of extracts from K562 cells using db11944 at 1:1000.



Immunofluorescent analysis of Jurkat cells using db11944 antibody (green), and DAPI (blue).



Immunofluorescence analysis of HeLa cells labelling HDAC1 with db11944.

The cells were fixed with 4% PFA (10min, RT) followed by treatment with 0.1% Triton X-100 (10min, RT), and blocked in 1% BSA/10% normal goat serum/0.3M glycine in 0.1% PBS-Tween 20 for 1h. The cells were then incubate with db11944 (1:50) at room temprature for 1h, followed by a further incubation at room temperature for 45min with Goat Anti Rabbit IgG (H+L)-AF488 (db10005, shown in green). Nuclear DNA was labeled in blue with DAPI.

Control: Secondary antibody only.