

Recombinant

DGRmAb®

## MCM5 (DGR11538) Rabbit mAb

db11957

Package : 10µL 20µL 50µL 100µL

**Product Name** : MCM5 (DGR11538) Rabbit mAb**Cat.No.:** db11957**Synonyms** : CDC46; MGORS8; P1-CDC46**Application** : IHC-P**Reactivity** : Human**Host species** : Rabbit**Background**

The protein encoded by this gene is structurally very similar to the CDC46 protein from *S. cerevisiae*, a protein involved in the initiation of DNA replication. The encoded protein is a member of the MCM family of chromatin-binding proteins and can interact with at least two other members of this family. The encoded protein is upregulated in the transition from the G0 to G1/S phase of the cell cycle and may actively participate in cell cycle regulation. [provided by RefSeq, Jul 2008]

**Immunogen**

A synthetic peptide of human MCM5

**Gene ID**

4174

**Swiss Prot**

P33992

**Synonyms**

CDC46; MGORS8; P1-CDC46

**Reactivity**

Human

**Application**

IHC-P

**Recommended dilution**

IHC-P: 1:1000-1:2000

**Calculated MW**

82 kDa

**Observed MW**

82 kDa

**Host species**

Rabbit

**Clonality**

Monoclonal

**Clonality No.**

DGR11538

**Isotype**

IgG

**Purity**

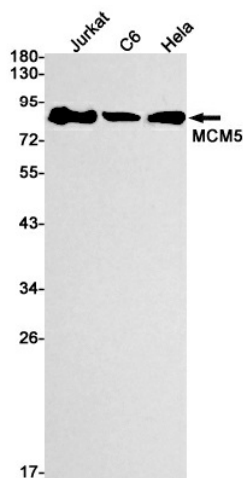
Affinity Purification

**Conjugation**

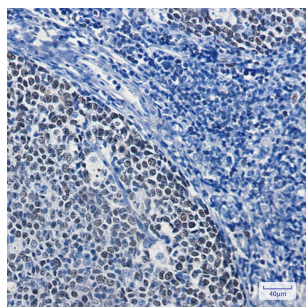
Un-conjugated

## Storage Stability

Store at -20°C. Supplied in 50mM Tris-Glycine(pH 7.4), 0.15M NaCl, 40% Glycerol, 0.01% sodium azide and 0.05% BSA. Stable for 12 months from date of receipt.



Western blot detection of MCM5 in Jurkat,C6,HeLa cell lysates using MCM5 antibody(1:1000 diluted).



Immunohistochemical analysis of paraffin-embedded human tonsil using db11957 antibody.