

Recombinant

DGRmAb®

AKT1/2/3 (DGR16839) Rabbit mAb

db11977

Package : 10µL 20µL 50µL 100µL

Product Name : AKT1/2/3 (DGR16839) Rabbit mAb**Cat.No.:** db11977**Synonyms :** MPPH; PKBG; MPPH2; PRKBG; STK-2; PKB-GAMMA; RAC-gamma; RAC-PK-gamma**Application :** WB, IHC-P, ICC/IF, FC, IP**Reactivity :** Human,Mouse,Rat**Host species :** Rabbit**Background**

The protein encoded by this gene is a member of the AKT, also called PKB, serine/threonine protein kinase family. AKT kinases are known to be regulators of cell signaling in response to insulin and growth factors. They are involved in a wide variety of biological processes including cell proliferation, differentiation, apoptosis, tumorigenesis, as well as glycogen synthesis and glucose uptake. This kinase has been shown to be stimulated by platelet-derived growth factor (PDGF), insulin, and insulin-like growth factor 1 (IGF1). Alternatively splice transcript variants encoding distinct isoforms have been described. [provided by RefSeq, Jul 2008]

Immunogen

Recombinant protein of human AKT1/2/3

Gene ID

10000

Swiss Prot

P31749

Synonyms

MPPH; PKBG; MPPH2; PRKBG; STK-2; PKB-GAMMA; RAC-gamma; RAC-PK-gamma

Reactivity

Human,Mouse,Rat

Application

WB, IHC-P, ICC/IF, FC, IP

Recommended dilution

WB: 1:1000-1:5000

IHC-P: 1:100-1:200

ICC/IF: 1:100

FC: 1:200-1:500

IP: 1:100

Calculated MW

56 kDa

Observed MW

56 kDa

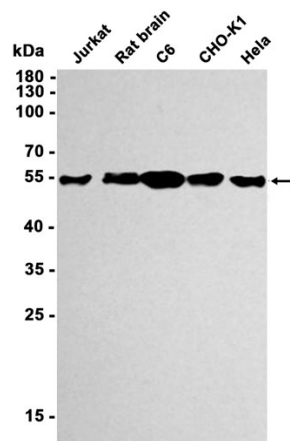
Host species

Rabbit

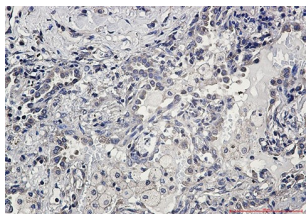
Clonality

Monoclonal

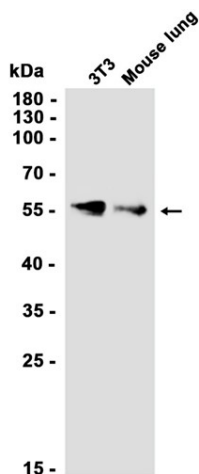
Clonality No.	DGR16839
Isotype	IgG
Purity	Affinity Purification
Conjugation	Un-conjugated
Storage Stability	Store at -20°C. Supplied in 50mM Tris-Glycine(pH 7.4), 0.15M NaCl, 40% Glycerol, 0.01% sodium azide and 0.05% BSA. Stable for 12 months from date of receipt.



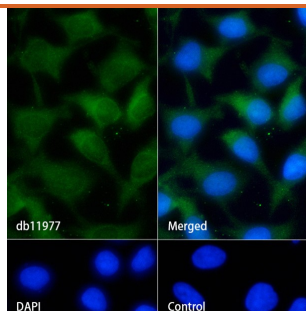
Western blot analysis of extracts from Jurkat, C6, CHO-K1, HeLa cells and Rat brain tissue using db11977 at 1:1000.



Immunohistochemical analysis of paraffin-embedded human lung cancer using db11977 antibody.



Western blot analysis of extracts from 3T3 cells and Mouse lung tissue using db11977 at 1:1000.



Immunofluorescence analysis of HeLa cells labelling AKT1/2/3 with db11977.

The cells were fixed with cold 100% methanol (10min, 4°C) and blocked in 1% BSA/10% normal goat serum/0.3M glycine in 0.1% PBS-Tween 20 for 1h. The cells were then incubate with db11977 (1:100) at room temprature for 1h, followed by a further incubation at room temperature for 45min with Goat Anti Rabbit IgG (H+L)-AF488 (db10005, shown in green).

Nuclear DNA was labeled in blue with DAPI.

Control: Secondary antibody only.